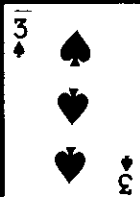
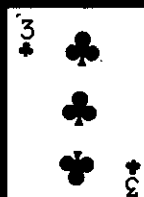


# CRIBBAGE WORLD



VOLUME XXV - NUMBER 3 - MARCH 2004

## AMERICAN CRIBBAGE CONGRESS

*1,008 Peggers!*

# TOC: Mike Burns ACC Open: Roland Hall

The Sands Hotel/Casino in Reno was awash with peggers in early February as some 1,008 players hit the boards in the annual ACC/Joseph P. Wergin Open, and another 542 played the Tournament of Champions...an event by invitation only.

Play began in earnest on Thursday night at 6:30 PM for the 14th annual All-Star game (see story, this issue) and continued unabated until 9 PM Sunday night when the last pegs were laid away following the conclusion of the 776-player Consolation.

Kicking off the Tournament of Champions on Friday were 542 players from throughout the USA and Canada who qualified for an invitation through a variety of criteria. Two-Star Duane Toll (WI) is currently leading the nation in MRP's scored this cribbage year, and he continues his roll by taking qualifying honors (and a hefty Q-pool prize). But when the playoffs wound down, it was Master Mike Burns (MN) singing softly to himself "It's a lot like Christmas" as he waltzed down 4th street to take the win...and \$6,500. Another Minnesotan, Master Mike Vadenais, finished 2nd (\$3,850). Jerry Hauf from Alaska and first-time TOC player Bill Maciej (CA) took home the 3-4 spot (\$2,000 each).

TOC Director Joan Rein's new format has a "Cribbage Bowl" on tap for the non-qualifiers in the TOC and for other peggers in the house who did not qualify for the TOC. This event drew a whopping 592 players and it was Master Dutch Gerlich (MD) coming home the winner (\$1,800) in this 12-game high card event. Steve Ihrig (OR) took 2nd, followed by Master Norman Nikodym (CA) and Grand Master George Mackie (WA).

On Saturday morning, the Sands was awash with some 1,008 peggers chomping at the bit to have a go at the \$10,000 top prize. Needless to say, the pegging was intense, and after the 22-game qualifying round John Syftestad (WI) unofficially earned his Grand Master with a superlative 41 19/22 +332 to easily take Q honors (and \$1,500). 252 peggers qualified for the playoffs, and the 252nd qualifier (by 2 spread points over the 253rd score) zipped to the championship...and the \$10,000. Roland Hall (CA) pulled off this unusual win, and with the 315 MRP's joins Duane Toll at the top of the nation's leaderboard with both players having topped the 1,000 mark for this cribbage year.

Continued on page 2

## TOC: Mike Burns

Continued from page 1

Hall's playoff strategy was unusual and controversial as he employed a very deliberate and time-consuming style of play, complete with numerous deck changes, and other stalling tactics that, nevertheless, resulted in a 4-3 win over Canadian Ron Saik, last year's Division 1 Grass Roots Champion (321 GR points). Hall garnered the coveted \$10,000 top prize, and Saik took home a whopping \$6,500 for 2nd. Saik also took home 252 MRP's for his high finish. Warren Bush (CA) and Gerald Klein (BC) finished tied for 3rd (\$3,700 each). In the round of 16 Bush stunned Victor Struminger (GA) by scoring a 28-hand and 6 crib, pegging 2, needing 35 to win, helping him to continue on in the playoffs.

The ACC's second-largest event of the year is always the ACC Open's Consolation, and this time around another huge crowd signed on for play. With 776 peggers in action, it was almost the Sharlene Medeiros Open as this Life Master from Massachusetts nailed down the top Q action (19 9/9 +177) and continued on to finish 3rd. This grand run netted Medeiros 168 MRP's (aggregate). But the winner was John Aird (MI), who came from behind in the final match with William McMillan (WY) to win 3-2. With the score 2-1 in McMillan's favor, it appeared the match was all but over when McMillan began game 4 with a huge 28-4 lead. The cards turned in favor of Aird at the turn and he continued on with hot cards to take game 5 as well. The win earned Aird (unofficially) his Master rating (and \$2,250). Master Lyle Lund (MN) finished in a 3rd place tie with Medeiros.

The entire weekend's pegging went smoothly as scores of volunteers worked tirelessly to keep all events on track. The crowd was appreciative, giving co-director Scott Kooistra an ovation as he gave the crowd last-minute instructions to begin Consolation play. Other directors were also on track with their expertise (Joan Rein, Roy & Jeanne Hofbauer). And when the last game wound down at 9PM Sunday, the entire staff breathed a sign of relief. And many peggers were heard muttering to themselves, "Wait 'til next year!"



The pegging action was intense at the TOC and ACC Open in Reno, but action in the casino was also spirited. Among the big winners were Carolyn Blackman (OR), Nancy Lorenz (OR), Bayard Lliteras (ID), and Betty Davis (CO).

The huge crowd is always tough to manage, but the staff was up to the challenge. Three players were unable to continue, felled by sickness, but substitutes were found to fill in. One of them, Diane Schaefer, filled in for a player in the Cribbage Bowl and won all of the final 7 games, giving the dual card a 10 for 12. Normally a winner, ACC rules forbid a prize for a combo card.

TOC director Joan Rein reported that not a single player reported late and begged to be admitted. She has the players well-trained! She also asks cribbage land for volunteers for next year's action, as many of the veterans need a break.

Dave Paulson (CA) turned an unusual crib hand...a royal flush, all hearts.

Two tee-shirts had clever graphics. One read, "I still miss my wife...but my aim is getting better!" The other read, "Go on home, take a nap, get more money, come on back!" And, of course, there was the "Big Daddy" shirt worn by Larry Pisha, a mountain of a man from Portland, OR. Clothes horse Bill Medeiros was in fine regalia once again, wearing a snake, lion, and other colorful shirts.

## Wedding Bells

On Thursday two weddings took place at a nearby chapel. Susan Herman (WA) and Jim Knutson (WA) tied the knot. And shortly thereafter it was Patti Dahms (OR) and Graeme Gossett (OR) getting married at the same chapel. Patti and Graeme will be co-directors of the upcoming Oregon Championship, Prineville, OR, to be played April 16-18.

Many players complained about no lapel pins this year (customized name tags were given instead). The Sands is heeding the complaints and will, once again, give pins next year.

And last (and least), two ex-national champions met in game six of the ACC Consolation. They compared score cards, and both had lost their first five games. 1983 national champ, Norm Wright (WI), and 1998 champ DeLynn Colvert (MT) had it out in a meaningless game. The game was decided by one point...all for naught!

# CLUB

# 29

- 1- Carl Heath, Sunnyside Midweek, Aug 7
- 2- Jeanne Hofbauer, Mt. Bachelor, Aug 18
- 3- Ron Haglund, Nipomo Open, Aug. 16
- 4- Ron Morgan, Labor Day, Aug. 31
- 5- John Thibault, Daniel Webster, Sept. 7
- 6- Mona Wahlig, WI Dells Classic, Oct. 26
- 7- Trevor White, Charm City, Nov. 8
- 8- Bob Fitzgerald, Yankee Classic, Nov. 18
- 9- Bob Bartosh, Xmas Wrap, Nov. 23
- 10- Ethan Guyaz, N. NE Champ., Dec. 6
- 11- Jim Langley, Pacific Coast, Jan. 17
- 12- Sylvia Sutton, Peg for Border, Jan. 17

## Frank Carter Virginia Champ

Frank Carter, pegging out of Raleigh, NC, zipped north to Virginia and came away with the Virginia Championship, after qualifying 16th (of 16 qualifiers). This event was played at Richmond on January 9-11. With some 62 players, Carter took home 105 MRP's and bragging rights galore. Master Marvin Lewis (VA) came close, but settled for 2nd an effort to keep the championship in his home-state. Ray Klocko (VA) and Master Warren Gallagher (MA) finished in the 3-4 bracket, with each player taking home 42 MRP's. Master Keith Widener (NC) took Q honors with a nice 35 16/22 +221 (45 MRP's).

Master Rick Bryant (MD) zipped to the 47-player Consolation win, besting Phil Babcock (VA) 3-0 in the final playoff match. Babcock was also the bridemaid in the 2003 Consolation. Master Dutch Gehrlich (MD) and Mike Feretta (VA) finished 3-4. One-Star Bill Medeiros (MA) nailed the Q round with a great 18 8/9 +139, adding 21 MRP's to his lofty lifetime total (11,200+).

Directors Rick Allen and Janet Meinert hosted a full array of satellite events. The winners:

**Opening Skirmish:** Bill Medeiros (MA) 19/10 +169

**Old Dominion Special:** Ray Klocko (VA) 16 7/9 +118

**High Rollers:** Sue Cousens (ME) 16 6/9 +143

**28's:** Marvin Lewis (Opening Skirmish)

**Ray Klocko (Main Event)**

Directors Allen and Meinert plan a re-run next January 7-9 in Richmond. Mark your calendars.

## play winning CRIBBAGE

Written, illustrated by  
Life Master (Four-Star)  
**De Lynn Colvert**

\$11.45 (postpaid)

or 2 for \$20.45

price reflects postal rate increase

Money-back guarantee

"I read this book and it helped me a whole bunch! I recommend this book!"

*Jim Langley*

Record-setting 2001 National Champion

### White Formica Long Boards

with your custom logo (your name or club, etc.)

Choice of logo colors - \$13.95 (postpaid)

\$9.95 for 10 or more, plus shipping

Peg holder and 4 knurled metal pegs included

Non-slip pads on back



**Wooden Pegs 10 cents (postpaid)**

fits 1/8" holes (standard) 1 1/4" x 1/4"

Minimum order \$2 (20 pegs)

9 cents each, 100 or more (postpaid)

**STARR STUDIOS - Box 5604**

Missoula, MT 59806

(406) 543-6855 (FAX same)

## CRIBBAGE WORLD

**Cribbage World** (ISSN 1058-7772/#007-016) is published monthly for \$10 per year by **Cribbage World**, PMB 5194, 1030 W. Harvard Ave., Roseburg, OR 97470. Periodical postage paid at Roseburg, OR and additional mailing offices. POSTMASTER: send address changes to: **Cribbage World**, PMB 5194, 1030 W. Harvard Ave., Roseburg, OR 97470-2923

For news and advertising, contact the editor:

**De Lynn Colvert**

PO Box 5604, Missoula, MT 59806

Telephone and FAX: (406) 543-8855

e-mail: [cribwrd@msn.com](mailto:cribwrd@msn.com)

**Ad rates:** 1/3 column: \$20, \$200 year (12x)

**Sanctioned** 2/3 column: \$35, \$300 year (12x)

**tournament:** Full column: \$50, \$400 year (12x)

**\$70 full page** 1/3 page: \$35, \$300 year (12x)

**\$35 half page** 2/3 page: \$60, \$600 year (12x)

Full page: \$85, \$850 year (12x)

Deadline for copy: 15th of month before next month's issue. Checks payable to American Cribbage Congress

## Jeanne Jelke Cops Pacific Coast

With an even 100 peggers in the field, newly-crowned Master pegger Jeanne Jelke (WA) came away the winner at the recent Pacific Coast Championship, held at Salinas, CA on January 16-18. The final playoff match pitted her vs. Al Moy (CA) and she zipped to the title. This is the third year in a row the fair sex has won this event. Life Master Steve Reynolds (CA) and Master Ervin Bentz (CA) finished in the 3-4 slot. Life Master Bill Wakeman took home the Q prize with a nice 36 GP card.

It was the Boyd McDonald Open in the 70-player Consolation. This Grand Master from Mountain View, CA not only took qualifying honors, but came home the winner in the playoffs as well. McDonald netted a nifty 105 MRP's for this great run. Veteran Roy Banducci (CA) finished 2nd, and unofficially earned his Life Master rating. Leon Korba (CA) and last year's All-American Cres Fernandez (CA) finished 3-4.

Director H. Ross Njaa sported a full array of satellites. The winners:

Friday: Dave Shifflett (CA)

Saturday: Ron Morgan (CA)

All Events: Duane Toll (WI)

Super Q: Ed Bloom (CA)

Team: Wakeman, Toll, Langley, Hall

29: Jim Langley (ACC's 11th)

28: Julie Felkins, Jesse Jarrell, Al Moy

A highlight of this event saw two-time national champion Jim Langley score the ACC's 11th 29-hand this cribbage year. Langley will receive \$100 from the ACC for this gem.

### In Memoriam

**Jay M. Snyder**

San Leandro, California

Jay died January 17 following a long illness. He was a joy to be around as he always had a joke for all to enjoy. He loved his cribbage and played many Grass Roots matches at nearby Castro Valley. He was an excellent player, having attained his Master rating. He will be missed by all.

**Terry Mayhew**

Edmonton, Canada

Terry passed away on January 20. He was a dedicated pegger with the Edmonton Grass Rooters who loved his cribbage. His many friends and peggers mourn his passing.

## Roz Berman Pegs South, Wins Peg For The Border

Roz Berman (CA) kept her pegs heading south and moving fast as she winged it to the Peg For The Border title on January 18 in La Mesa, CA. She nipped Michael Green (CA) in the final playoff match in this 44-player event to take home 105 MRP's and the grand prize. LeRoy Johnson (MN) was enjoying the warm weather as this Minnesotan nailed down 3rd. Master Darlene Carr, the local favorite, also finished in the 3-4 bracket. Both players carted home 42 MRP's.

Sylvia Sutton (CA) scored the ACC's 12th 29-hand this cribbage year enroute to the high qualifier card...a superlative 40 19/22 +300. This is one of the better cards this cribbage year.

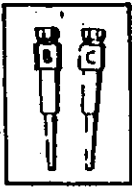
Master Don Brown made mince meat of the 24-player Consolation field, taking Q honors (19 8/9 +151) and winning the playoffs as well. The 64 MRP's very nearly earned him his Grand Master rating. Tom Bongard (CA) was the last victim of Brown's run, finishing 2nd. Master Cy Madrone (CA) and local Julie Hardardt finished 3-4.

Director Shelly Berman had all events running smoothly and the players were treated to a nice lunch, coffee, and sweets.

*Bruce's Pegs*

Your initials w/5mm cubic zirconias

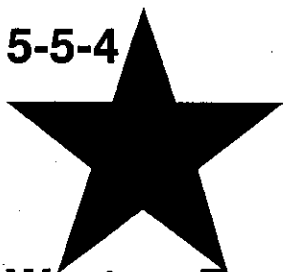
Nickel  
Plated



\$15/pr  
w/pouch

**Bruce Corson**  
8183 S. E. Villa Way  
Hobe Sound, FL 33455  
(772) 545-9536  
email: brucepegs@webtv.net

5-5-4



## Western Region Cops All-Star Game

Kicking off the gala weekend of pegging at the TOC and ACC Open in Reno, the 14th Annual All-Star game was one of the closets matches in the series. The pegging was intense, as the top 8 players from each region played the other 16 players in a 16-game match.

The Western Region, aided by a whopping 14 skunks, took the win, giving them 5 wins in the series. The Eastern Region has also won 5 events, and the Central has won 4. The scores were very close, with the Western squad winning 65 games, the Eastern team taking home 64 wins, and the Central winning 63 games. Games points went to the West (144), East (138), and Central (132).

Grand Master Don Patrin (MN) made a valiant effort to keep the Central Region in the match as he scored the meet's top score of 28 13/16. The Western Region's combo of Life Master Rollie Heath (25 11/16) and Grand Master Sharon Hejtmanek (24 11/16) carried the Western team to the win. One-Star Bill Medeiros had the top score for the Eastern squad (25 11/16).

### *Gene Sissel Memorial On Tap*

The ACC lost veteran pegger Gene Sissel last October 29 at the age of 72. The upcoming Northwest Open will be played as a memorial to Gene. This is the longest running event in the Northwest, and will be played March 19-21 at Baker City, Oregon. Steve Palmer will be the host director. See Tournament Trail, this issue, for details.

### **The Paul and Rollie Battle Continues**

One-Star Paul Hatcher and Life Master Rollie Heath are two Oregon peggers that play many, many games before, and after events, in a spirited competition. They were recently tied at 480 MRP's each, and after the Reno matches, they stand at 654 MRP's each! Place your bets and pick your winner for 2004! The odds are even!

## ACC Stands At 7,274

ACC Membership Chairman Larry Hassett reports that as of January 31, the ACC stands at 7,274 members. Growth for the past several years has been steady, and with Internet play on tap, look for a jump upwards in the next year.

## Cribbage Tournament II

*by Mike Burns*

To play some cribbage it was off to Reno  
But the tournament was held at a casino.

You play your heart out to make some dough  
But between the sessions things were slow.

A trip to the tables of the Sands  
Left me there with empty hands.

*This poem was penned by Burns before play began this year at Reno's TOC. He was destined to win the Tournament of Champions (and \$6,500). Let's hope he did NOT lose this wad at the tables.*

*Burns is one of the ACC's best poets. He has written a book of poems, titled "Cribbage by the Master." He will sell you his book for a ten spot, postpaid. Write to: Mike Burns, 111 9th Ave. N., St. Cloud, MN 56303. Ed.*

## Neat Shirt

Willie Evans (WA) set a record score in Hermiston, Oregon last April 26. He burned the tracks for an ACC record 46 19/22 +476!

The Hermiston club made Willie a shirt that reads:

**HERMISTON  
THIS IS WHERE I EARNED  
THE NEW WORLD RECORD  
ACC SCORE CARD!  
46 19/22 +476  
April 26, 2003**

Willie reports that on that fateful day he did NOT win a playoff match. He also qualified for the Consolation playoffs, and failed to win a match there as well. He did, however, score a nifty 160 MRP's, despite not advancing.

## **Super Lite Plays to 114 Jerry Hardy Wins Third Sanctioned Event**

The Dante Club in West Springfield was abuzz with 114 peggers on January 25, and when the pegs were laid away it was rookie Jerry Hardy, Bowdoin, ME, coming away with his third sanctioned win this cribbage year. This astounding performance by a first-year player is unprecedented in ACC history. This time around he nailed Master Pat Llewellyn (MA) in the final playoff match to take the title of Super Lite champ. Master Susan Cousens (ME) and Life Master Richard West (MA) finished 3-4. Leo Gendron (MA) topped the field in the Q round with a nice 21 9/12 +78 to take honors.

Life Master Rob Medeiros (MA) won his 4th life-time Consolation event (10 Main Event wins) by besting Jay Scungio in the final playoff match in this 62-player contest. Frank Corrado (CT) is zeroing in on his Life Master with a 3-4 finish. Barbara Barbour (CT) also finished in the 3-4 bracket. Michael Samet (NY) won 8 of 9 to take Q honors (17 8/9 +135).

Directors James Law and Charlie Finley reported a single 28-hand showed...by Master Richard Brault (MA).

## **Stuart Lawent Nails Carter Classic**

Stuart Lawent (WI) won the the Carter Classic in Carter, WI on January 11 by besting Life Master Patrick Barrett (WI) in the final playoff match. The win came with 147 MRP's and the grand enchilada. Barrett garnered yet another 105 MRP's to add to his lofty 7,800+ lifetime total. Emil Den Dekker (WI) and Tom Edwards (IL) finished 3-4 in this 100 player match. Life Master Deb Kvien took the Q prize with a nice 35 GP card.

Grand Master Bob Chase (MN) very nearly ran the table in the 57-player Consolation, taking Q honors (18 GP's) and finishing 2nd in the playoffs, but it was Life Master Donald Flesch (WI) winning the playoffs. Marsha Mahan (WI) and Master Lyle Lund (MN) finished 3-4.

Director Dottie Culver reported the following satellite winners:

Friday Early Bird: Frank Pacucha

Friday: Jim Porkorney

Saturday: Jerome Fischer

28's: Dennis Pokorney, Paul Kilkelly, Bob Chase, Donald Patrin, Frank Pacucha

## **Betty Schaeffer Tops In Georgia**

Master Betty Schaeffer, pegging out of Kissimmee, FL, went north to Savannah, Georgia and nailed down the win at the 78-player Savannah Open on January 18. Her last match was with the streaking Grand Master Jeff Raynes (NC) who had topped the field in the qualifying round (38 17/22 +294), but could not hold off Schaeffer in the final match. Schaeffer carted home 147 MRP's, and Raynes garnered an aggregate 165 MRP's. Master Jim Lunder (FL) and Lindsay Peever (FL) finished 3-4 (and 70 MRP's each).

Joy Barnes is nearing her Grand Master by taking home the win in the 42-player Consolation, nipping Steve Angier (GA) in the final playoff match. Bobby Stuart (GA) is also very close to his Grand Master and finished in the 3-4 bracket with Aaron Geroux (NC). Andrew Hulcher (VA) was the Q winner with a 15 7/9 +51.

Director Bill Cooper reported it was "ladies day" at this event, with the fair sex taking both the Main and Consolation. In the Friday night game it was Terry Clark coming home the winner, and on Saturday night Jeff Raynes took home the bacon. The skunk pot took a beating as one-half the pot went to a 28-hand recipient...and four were scored: Betty DiTommaso, Larry Phifer, Frank Podjun, and Jeff Raynes. The host Masters Inn served coffee, donuts, and soda three days running to add to the enjoyment of the players.

## **Hand-Crafted Cribbage Boards**

Tournament style hardwood  
Wood Inlay Skunkline w/ Wood Pegs  
Silk Screened Arrows  
Brass Slider - Satin Finish  
**\$15** (add \$5 shipping)

Hand crafted by  
**Roy W. Boyles**  
3401 Wemberley Dr.  
Sacramento, CA 95864  
(916) 487-1806

**www.roysboards.com**  
*Please make checks payable to  
Leukemia & Lymphoma Society*

# OREGON COAST CLASSIC

**Chinook Winds Casino - Lincoln City, Oregon**  
**April 30 - May 1-2, 2004**

**\$1,000 Added**, courtesy of Chinook Winds Casino  
All events guaranteed 90%\* (or more) paybacks (cash & trophy boards) plus \$1,000 added to Main & Consolation

\*After \$1.50 ACC sanctioning fee deducted.

No smoking in playing hall (space provided)

Shuttles available from motels to Chinook Winds

Free camper space available - no hookups - 32 spaces available

**Bring Your Winner's Circle Players Card with you!**

Sanctioned by  
**AMERICAN  
CRIBBAGE  
CONGRESS**

## *Schedule of Events*

Friday, April 30:

2 PM, Time Passer, 9 games \$10, \$10 & \$20 Q  
7 PM, Doubles \$50/team 9 games, no playoffs  
7 PM, Hi-Rollers, \$50/12 games, no playoff (\$50 Q optional)

Saturday, May 1:

8 AM, Registration, \$46.50, optional \$10 Q  
9 AM, 22 games vs. 22 opponents, top 25% advance  
7 PM, Sat. Special, 9 games, \$10, \$10 & \$20 Q

Sunday, May 2:

7:30 AM, First Round Playoffs, best 3 of 5  
8 AM, Consolation Registration  
9:30 AM, Consolation, \$20/\$10 Q, 9 games top 25% playoff 2 of 3

## *Sponsoring Motels (ask early for cribbage discount)*

The Ashley Inn, 3430 NE Hwy 101, 1-800-639-7873 or (541) 996-7500

Ester Lee Motel, 3803 SW Hwy 101, (541) 996-3606 or 1-888-996-3606

Liberty Inn, 4990 Logan Rd., (541) 994-1777 or 1-(877) 994-1777 (road's end)

Horizon Rentals, 1-800-995-2411 or 1-541-994-2226

Sandcastle Beachfront, 3417 SW Anchor, (541) 996-3613

Sea Horse, 2036 NW Harbor Dr (oceanfront), 1-800-662-2101 or (541) 994-2101

Shilo Inns & Resort, 1501 NW 40th Pl., 1-800-222-2244 or (541) 994-3655

Captain Cook Inn, 2626 NE Hwy 101, (541) 994-2522

Surfside Beach Resort, 2945 NW Jetty 1-800-452-2159

Sande Condominiums, 1525 NW Harbor, (541) 994-3443

The Inn at Spanish Head, 4009 SW Hwy 101, 1-800-452-8127

**Please register early - entry fee refunded if you must cancel**

**Two (2) \$25 drawings for entries postmarked by April 26!**

## *Co-Directors:*

**Rollie Heath**  
(541) 994-9658

## **Bernie Nelson**

(503) 965-6410 (day)  
(503) 392-3062 (night)

## **Roy & Jeanne Hofbauer**

30937 NE 23rd St.  
Washougal, WA 98671  
(360) 835-3623

clip & mail

☐ \$50 Doubles \_\_\_\_\_

Partner's name

☐ \$50 Hi-Roller \_\_\_\_\_

☐ \$50 Hi-Roller Q (optional) \_\_\_\_\_

☐ \$46.50 Main Event (ACC mhrs) \_\_\_\_\_

☐ \$56.50 Main Event (non-ACC\*) \_\_\_\_\_

☐ \$10 Main Event Q (optional) \_\_\_\_\_

\$ \_\_\_\_\_ Total ☐ Handicapped  
Seating requested

Name \_\_\_\_\_

Address \_\_\_\_\_

City \_\_\_\_\_ State \_\_\_\_\_ ZIP \_\_\_\_\_

Telephone \_\_\_\_\_ ACC# \_\_\_\_\_

Chinook Winds Player's Card# \_\_\_\_\_

**OREGON  
COAST  
CLASSIC**

*Make checks payable to  
Chinook Winds Open, mail to:*  
**Jeanne & Roy Hofbauer**  
30937 NE 23rd St.  
Washougal, WA 98671  
(360) 835-3623

\*\*Includes 1-year membership in ACC

## BRONZE AWARDS

### NAME (CLUB) ST/PROV

MATT KOROLEK (203) BC  
JACK P. STOWE (190) CA  
JACK B. SHUMATE III (98) CA  
AL MCCULLOCH (207) CA  
BILL HUTCHINSON (34) CO  
ALVIN LOKITZ (230) FL  
MICHAEL BURNHAM (119) GA  
DONNA GAVIN (81) MA  
HARVEY RASMUSSEN (218) MI  
DONALD MEYER (94) MN  
GENE HOFFMAN (25) MT  
JOHN SIMAC (25) MT  
CHARLES DOLGE (221) NC  
BILL SUNDHEIM (175) NJ  
ROBERT ULRICH (198) WA  
BRYAN BORDENIK (148) WA

## New Judges

The following new Judges have been certified using the ACC Book of Rules:

Sean Arnold, Tucson, AZ  
David Carey, Nokomis, IL  
Dottie Culver, Townsend, WI  
Don Janelle, Manchester, CT  
Suzanne Warden, Great Falls, MT

To take the Judges examination send \$3 to:

Al Miller  
12 Michael Ave.  
Nashua, NH 03062-1418

It is impossible to lick your elbow.

## Barbara Woodward Checks In.....

Barbara Woodward, our liaison with the Sands Hotel/Casino in Reno, reports some fun facts for *Cribbage World*:

There were a total of 2,904 players in the four events, and the prize fund included some **\$215,270** (six funds, two Q's).

She wishes to express thanks to all the tournament directors, registrars, talley staff, board monitors, paymasters, and set-up volunteers who made this amazing weekend possible.

Joan Rein, director of the Tournament of Champions also adds her thanks for all the help that kept all events running smoothly. She reports that Don Brown, Mel Ashley, and Clarence Cole scored 28-hands in the TOC. Many others were scored in the ACC Open, and will be reported in *Cribbage World* when available (April issue).

*...and as President of the ACC, I would like to add my appreciation for all the help volunteered to manage this event. It was a whopper, and, in my opinion, one of the best ever! 1,008 players, wow! it was a "cribbage happening!"*

*DeLynn Colvert, President, ACC*

## In Memoriam

### Robert L. Schley

Spanaway, Washington  
Robert passed away on January 17 at the age of 52. He was a member of Tacoma GR 243 "31 for 2." Robert was the club's statistician for a number of years and was instrumental in getting the club started. He was an excellent player and will be missed by all his friends and pegging pals.

You will never find anybody who can give you a clear and compelling reason why we observe daylight savings time.

Never be afraid to try something new (like leading a 5). Remember that a lone amateur built the ark. A large group of professionals built the Titanic.

Men are like fine wine. They start out as grapes, and it's up to the women to stomp the crap out of them until they turn into something acceptable to have dinner with.



# 100% CASH PAYBACK + TROPHIES

(minus \$1.50 sanctioning fee per person)

## And \$1,000 Added Cash

Excellent Handicapped Accessibility! No smoking in the building. Coffee & Pastries will be served.

2 Q pools: graduated - top 1/8 & even-top 1/4. Must be 21 years of age to play.

Main & Consolation Events Sanctioned By:

## AMERICAN CRIBBAGE CONGRESS

### Schedule of Events

TRIPLE PLAY: Early Bird - Hi Roller or Doubles - Main

OTHER SIDE EVENTS: Team Play - Cry Baby - Raffle

#### Friday, April 2nd

3 PM **EARLY BIRD**, \$10/9 games, No Playoffs

7 PM **HIGH ROLLERS**, 9 games \$50 Entry, \$50 Graduated Q, No Playoffs

7 PM **DOUBLES**, \$50/team, 9 games, No Playoffs

#### Saturday, April 3rd - MAIN EVENT

8 AM **REGISTRATION**, \$55 for Non-Pre Registered Entries.

9 AM **ORIENTATION & PLAY** (22 games vs. 22 opponents) 25% to Playoffs

#### Sunday, April 4th

8 AM **MAIN EVENT PLAYOFFS**, Best 3 of 5

8 AM **CONSOLATION REGISTRATION**, \$20, Optional \$10 Q-Pools grad/even

9:30 AM **CONSOLATION PLAY**, 9 games.

1:30 PM approx. **CONSOLATION PLAYOFFS** best 2 of 3

1:45 PM approx. **CRYBABY**, \$10/7 games, No Playoffs

### PRE-REGISTER for your chance to win a Weekend Get-a-way for Two!

Money Refunded if you cannot attend.

Call 1-800-648-4770, Ext. 2207 for late entries or cancellation or Fax to (775) 623-1207

Director: Heidi Glashan - (925) 432-4277 (leave a message), Until Tuesday evening 3/30/04

Be Sure To Ask For Special Cribbage Room Rates: 1-800-648-4770, Ext. 2207

Hotel Queens or Double/Doubles.....\$25.00 Terrace & Villa Queen/Queens.....\$35.00

Terrace & Villa Queens & Double/Doubles...\$30.00 Suites.....\$55.00

Rates are for either Single or Double Occupancy, are subject to a 10% Room Tax, and are available on a first come, first serve basis.

## 9th Annual Winnemucca Classic

April 2, 3 & 4, 2004

Winnemucca Convention Center  
50 W. Winnemucca Boulevard  
Winnemucca, Nevada

Sponsored by:



In The Heart Of Downtown Winnemucca

SEND ENTRIES & MAKE CHECKS PAYABLE TO: The Winners Hotel • Casino - P.O. Box 1678, Winnemucca, NV 89446

☐ \$10 FRIDAY EARLY BIRD  
☐ \$25 FRIDAY DOUBLES (FOR YOURSELF)  
☐ \$25 FRIDAY DOUBLES (PARTNER)  
☐ \$50 Entry, \$50 Q, Pay 1 in 8 HIGH ROLLERS  
☐ \$50 SATURDAY MAIN EVENT  
☐ \$60 NON-ACC MAIN EVENT  
☐ \$10 MAIN EVENT Q-POOL (Optional) even top 1/4  
☐ \$10 MAIN EVENT Q POOL (Optional) grad. Top 1/8  
☐ \$20 TRIPLE PLAY  
☐ \$5 LATE FEE (Saturday Morning)  
**\$ TOTAL**

Name \_\_\_\_\_ ACC# \_\_\_\_\_  
 Address \_\_\_\_\_  
 City \_\_\_\_\_ State \_\_\_\_\_ Zip \_\_\_\_\_  
 Phone \_\_\_\_\_

HANDICAPPED SEAT REQUIRED ☐ ACC JUDGE? ☐

The tournament director reserves the right to refuse/eject any player at any time for inappropriate behavior. I agree to abide by the rules of

the American Cribbage Congress and rules set by the tournament director. \_\_\_\_\_ Signature

## Todd Anderson Tops Portland

Master Todd Anderson, pegging on his home turf, came away the winner at the recent Portland Winter event. Anderson has been to the final playoffs four times, and has come away the winner four times! In winning this 175-player event, Anderson garnered 196 MRP's, running this season's mark to the 400+ range. 2nd place went to One-Star George "Ras" Rasmussen (WA) and his story is the opposite of Anderson's...he has been to the finals (in Portland) four times and lost them all. Nevertheless he added 147 MRP's to his 10,400 mark (lifetime). Two Oregon peggers finished in the 3-4 bracket...Dennis Tracey and Dan Marsh.

Life Master Rollie Heath (OR) tacked on another 65 MRP's by scoring the meet's top Q card, a great 39 18/22 +217...and keeps his hat in the ring for top ten honors this cribbage year.

122 players were in the field in the Consolation, and it was Bill Mero (WA) nailing down the win. Mike Schell (WA), taking time off from getting the ACC's Internet play started, took home 2nd, followed by One-Star Roy Hofbauer (WA) and Rick Baird (OR) in the 3-4 slot. Top qualifying action went to Tom Langford (CA) with a nifty 18 8/9 +140.

Director Tim Julkowski had a full slate of satellites. The winners:

Early Bird: Bryant Gilkeson

High Rollers: Duane Toll

Doubles: Paul Hirschmann & Ken Julkowski

Saturday: Duane Toll (again!)

Last Chance: Bill Wakeman

All-Events: Duane Toll

Team: Jeanne & Roy Hofbauer, Chris McComas, Duane Toll, Cres Fernandez

Sadie Hawkins: Laurie Kenny & Chris McComas

28's: Dot Mickow, John Furler, George Mackie, Larry Antijunti, Peter Cameron

Julkowski reported 12 new players got their feet wet with ACC sanctioned play, and the host Ramada Inn gave the players a first-class Saturday luncheon.

## Duane Toll, Roland Hall Top 1,000 MRP's

The ACC/J. P. Wergin Open scores have yet to be posted, and major changes will occur in the Master Rating Points of our nation's peggers when the numbers are reported. With 1,008 players in action the the ACC Open's Main Event, and 776 playing the Consolation, buckets of MRP's will be added to player's ledgers.

The winner of the ACC Open, Roland Hall (CA) took home the maximum for a win (315) and came within a whisker of catching ACC - leading Duane Toll (WI). Toll is nearing the 1,100 mark, and Hall is at 1,020. Harry Palmer (MA) is near the 900 mark as the season hits over the half-way mark.

From that point on, several players have topped 700, with Jim Crawford (CA) slightly over 800. DeLynn Colvert (MT), John Furler (OR), Ras Rasmussen (WA), and Ronald Morgan (CA) are over 700. Jerry Hardy (ME), David Clemmey (MA), and Phyllis Schmidt (MA) are in the race having 600+ in the bag.

With the upcoming St. Croix Classic and Green Bay events on tap in late February, and a multitude of events nationwide scheduled this spring, the race is on. The top-ten players will have to keep their suitcases packed...and moving!

## Web Page Volunteers?

The ACC is experiencing red-ink the past three years and the ACC's web page needs a webmaster(s). If anyone in cribbagedom has this expertise and would like to volunteer to keep this internet contact up to date for our nation's peggers, contact Internet Committee Chairman:

Patrick Barrett

5824 Griffith

Wisconsin Rapids, WI 54495

(715) 424-5059

gnxvi@tznet.com

The current web page may be perused by clicking on [www.cribbage.org](http://www.cribbage.org)

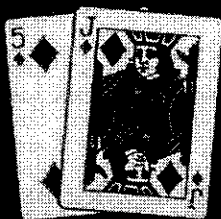
---

Believe it or not:

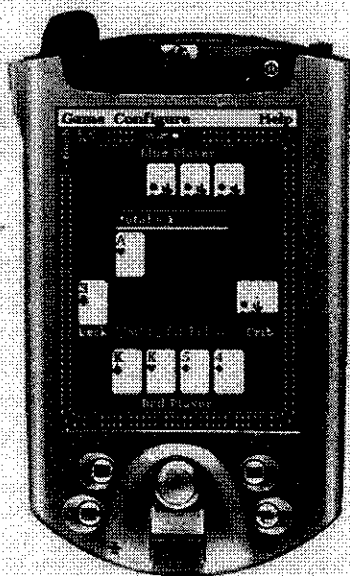
Marilyn Monroe had six toes.

*Did Joe DiMaggio care about that? Ed.*

# Elastic Software™ Favorite Card Games™



© 2003 Elastic Software, Inc.



- ◆ Cribbage
- ◆ Gin Rummy
- ◆ Monte Carlo Solitaire
- ◆ Reflection Solitaire

**\$19.99**

Price includes software only

## Play anywhere:

Mobile play is smooth in bumpy road conditions, and visible outdoors because of high contrast color themes.

## Game Hints:

Scalable computer AI. Game hints give you the same advice the computer uses to play. Track your wins!

**Cribbage now available for Palm OS!**

See our complete line of products for Pocket PC and Palm:

**[www.elasticsoftware.com](http://www.elasticsoftware.com)**

## ACC Internet Cribbage Rated play is here!

The American Cribbage Congress is pleased to announce its first season of rated Internet play. The inaugural season began on Thursday, February 12, 2004 and will end on July 31, 2004. Play will continue with the 2004-5 season, which will run from August 1, 2004 to July 31, 2005. Subsequent seasons will follow the same annual schedule.

Members who perform well in official ACC online tournaments receive Internet Rating Points (IRPs), which are tabulated on both an annual and a lifetime basis. Each season, the ten players amassing the most IRPs will receive All-Internet honors, with the highest rated player being crowned Internet Champion. The top 10% of players earning IRPs will receive an invitation to the ACC Tournament of Champions.

### How to participate

1. To compete officially you must be an ACC member in good standing

2. Go to [www.cribbage.org/internet](http://www.cribbage.org/internet) and read the FAQ and the pages on rules, tournament guidelines and the IRP system

3. Presently, all tournaments are held at **MSN Games by Zone.com** ([zone.msn.com/en/cribbage](http://zone.msn.com/en/cribbage)). If you don't already have a Zone.com screen name (nickname), create one now and spend some time learning how to use the MSN Games cribbage software

4. Once you have an established MSN Games screen name, register it with us at [www.cribbage.org/internet/reg.asp](http://www.cribbage.org/internet/reg.asp). This will link your screen name to your ACC member information

5. Consult the tournament schedule at [www.cribbage.org/internet/schedule.asp](http://www.cribbage.org/internet/schedule.asp) for dates and times of official events. There is no pre-registration...just sign up in the designated tournament room between 10 and 60 minutes before the start time. Some tournaments close after reaching a predetermined limit, so come early to guarantee yourself a place. Also be sure you have enough time to complete the tournament if you reach the later rounds (three hours is usually sufficient)

## ACC Internet Cribbage trivia

Q1: Who was the first person to win an ACC Internet Cribbage tournament?

Q2: Who was the first to win two tournaments?

(answers below)

ACC Internet Cribbage tournament winners:

January 12 Cribbage Cup  
**Richard W. Duckworth** (duckmaster1)  
Port Orchard, WA

January 22 Pegging Pals single elimination  
**John Elmer** (Teton2)  
Newberry Springs, CA

January 26 Cribbage Cup  
**Robert Meyer** (a9legged\_spider)  
Oceanside, CA

January 31 Pegging Pals single elimination  
**Mark Van Dyke** (loosespokes1135)  
Grand Haven, MI

### Trivia answers

Q1: **Jerry Hardy** of Phillips, ME, known online as *ovaeetz*, won the ACC Inaugural Classic on October 30, 2003.

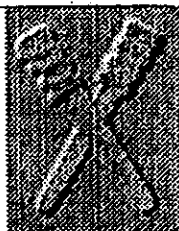
Q2: **Mark Van Dyke** (loosespokes1135) won the December 15, 2003 Cribbage Cup and the January 31, 2004 Pegging Pals single elimination to become our first two-time winner

## Rookie of the Year Jerry Hardy In Catbird Seat

Jerry Hardy is a new ACC member from Bowdoin, ME, and he is in the catbird seat for Rookie of the Year honors. As the cribbage season hits the halfway mark, Hardy has picked up three sanctioned wins and is at the 700 MRP mark. Not only is he on track for "Rookie" honors, he also is among the front runners for All-American honors as well. David Braach (MT) has won a sanctioned event, and has topped 200MRP's. Others in the running are Daniel Crete (NH), Alex DaSilva (MA), Mark Webster (ME), Patrick Halloran (CA), and Ken Masnica (WI).

# GRASS ROOTS CORNER

Items for this column are encouraged and should be sent to [TomLewis@Spinn.net](mailto:TomLewis@Spinn.net) or mailed to Tom Lewis, 7916 Eagle Rock Ave. NE, Albuquerque, NM 87122-2753



## 2003 GRASS ROOTS (GRRT) REGIONAL TOURNAMENT

The GRRT for the 2003 - 2004 season has now been completed. A Big time thank you is in order for our Regional Grass Roots Commissioners who each conducted a GRRT in their region. They are **Roger Wilson, Dave O'Neil, Patrick Ward and Alan Lindner**. They are all volunteers and have spent many hours compiling the information to make their tournaments work. They put together and mailed a letter of instruction to all the Grass Roots clubs, opened bank accounts to deposit the entry fees, and set up a GRRT tournament space in the website for clubs to enter their results. They tracked the entries that the club directors have entered into the system and made any needed corrections. After December 31<sup>st</sup>, they made sure all of the numbers balanced, prepared the standings, wrote the checks and mailed the prizes and a copy of the GRRT results to every participating club.

We had a total of **1760 (official) participants** throughout the USA and Canada this season. The top players in each region are listed below. Due to space limitations, only scorecards of 30 gamepoints and above are listed along with those receiving a 29 hand, 28 hand or a Grand Slam Scorecard.

Congratulations to **Thomas Halatsis (MI 912)** who had the highest GRRT scorecard in the entire USA and Canada. Thomas plays in Club 295, which is the Cribbage Club of S.E. Michigan in Rochester Hills, MI until the snow arrives and then spends the winter with Club 24 in Mesa, AZ.

Congratulations to **Dan Betz (MI 590)** who had the only 29 hand in the GRRT. Dan plays in Club 229 in Muskegon, MI. A bit of background on Dan. *A 29 hand in the GRRT deserves some extra space, right?* Dan was the dealer. After I threw my discards to the crib (I don't even remember what they were), I showed my hand to Larry Mayette (MI 745) who was sitting on my right (Jack of clubs and 5-5-5) and he turned to look just as I turned over the five of clubs! I have been a casual player since about 1960 and received my first 28 hand in local tournament play 1978. I joined the ACC in 1994, and began to really learn cribbage. On my 60th birthday in

2002, I received my 6th 28 hand (9-22-2000 ACC, 10-9-2000 GR, 10-30-2000 GR, 4-15-2002 GR, & 9-16-2002 GR) but no 29. Maybe the 29 hands will come in bunches like the 28 hands did. Well, I can hope, can't I!!

There were no 29s in the GRRT last season.

### What are the Odds?

**Region IV** had the same number of 28 hands and Grand Slams as last years' GRRT. **Robert West of Club 34 in Denver** finished 4<sup>th</sup> in Region IV this year and last year!

### REGION II - 518 Players

**Roy Hofbauer** - 33/14/+275  
**James Hartung** - 32/15/+178  
**Lloyd Stinson** - 31/15/+189  
**Herbert Lee** - 31/15/+109  
**Leeson Ruff** - 31/14/+243  
**Henry Ketzler** - 31/14/+143  
**Peggy Reed** - 31/13/+261  
**Karen Ferraro** - 31/13/+225  
**Zeb Atwood** - 30/14/+250  
**Barbara Corradi** - 30/14/+206

### REGION IV - 482 Players

**Jim Langley** - 33/16/+203  
**Robert Gillette** - 32/14/+237  
**Albert Fizer** - 31/15/+198  
**Robert West** - 30/14/+177  
**George Waudby** - 30/13/+162

### REGION VI - 384 Players

**Thomas Halatsis**, - 34/14/+264  
**Rudolph Rogutich** - 32/15/+192  
**Bob Cook** - 31/14/+212  
**Richard Neunsinger** - 30/13/+176

### REGION IX - 217 Players

**Tom Ballweg** - 325/14/+174  
**Andy Wroblewski** - 31/14/+173  
**Stanley Mullins** - 30/14/+140

### REGION XII - 190 Players

**Jack Allison** - 30/14/+161

## GRRT AWARDS

### 29 Hands - \$100

Dan Betz MI 590

### 28 Hands - \$25

Ken Richmond	OR 668
Patricia Feelyn	AK 150
Robert Sage	OR 2420
Jay McClosky	ID 308
Karl Lagerman	AB 378
Anne Sheeran	CA 1366
Bonnie Van Bergan	CA 2148
Bruce Aveson	CA 4926
Helen Momaney	CA 5019
Dudley Young	CA 5287
Gary Dunham	MI 849
Delores Brey	WI 1907
Hazel Carlson	FL 1352
Frank Danielski	WI 508
Clarence Fischer	MN 1291
Pete Holt	MN 1279
Janet Martin	MI 1048
Carl Deyette	CT 216

### Grand Slam Scorecards - \$25

Joyce Antonation	BC 304
Steve Harding	CA 307
Jim Langley	CA 595
Rudy Rogutich	WI 2080

WALTER BALLOU AND HIS DAUGHTER LYNN HAVE BEEN MEMBERS OF THE **PEGGING POLECATS, CLUB #168, IN EAST GREENWICH, RI** FOR SEVERAL YEARS. THEY PLAY A LOT OF CRIBBAGE AGAINST EACH OTHER AND A COUPLE OF YEARS AGO WALTER SCORED A 29-HAND (WITH THE FIVE OF SPADES) WHILE PLAYING LYNN AT HOME. ON WEDNESDAY, JANUARY 14TH, 2004 WALTER AGAIN SAW THE FIVE OF SPADES CUT FOR A 29-HAND THIS TIME IN GRASS ROOTS COMPETITION AGAINST FELLOW MEMBER JOHN PETTIGREW. WHAT A FANTASTIC WAY TO BEGIN THE SECOND HALF OF THE 2003/2004 CRIBBAGE SEASON.

### **Chehalis-Centralia Cribbage Club OLE OLSON SPECIAL (From RAS):**

What was so special about OLE? Aldor "OLE" Olson visiting the Chehalis-Centralia Cribbage Club in late summer of 1998? This was shortly

after he had celebrated his 91<sup>st</sup> birthday on July 4. Although he was born in 1907 and had played cribbage since 1921, "OLE" did not know of organized cribbage and the efforts of the American Cribbage Congress. During that 1998 summer, "OLE" wrote the names of each club member he played on the reverse of his scorecard and took the scorecard home with him. He studied those printed names and mentally associated them with the faces so that he would feel a part of the group more quickly. That fall he joined the **Chehalis-Centralia Cribbage Club** as an official member. He attended 35 of 36 scheduled events during that 1998/99 season. As the 1999/2000 season began, "OLE" again registered as an official member and attended 35/36. It should be noted that "OLE" celebrated his 93<sup>rd</sup> birthday on July 4, 2000. As it turned out, "OLE" passed away a few days after that birthday party attended by family, friends, and members of the club. During the time that "OLE" played with our group, he saved all the money he won, which was a sizable amount. He had instructed his loving daughter, **Marty Eastman**, to return this money to the **Chehalis-Centralia Cribbage Club** after his death. "OLE" had scored fifteen gamepoints on two occasions to claim first prize in our weekly sessions, won a local crib-board trophy which was proudly displayed at his funeral service, and he had the best 29-gamepoint card in Washington State Cribbage Championships of 2000 and finished 16-32 in a crowd of 177. "OLE" was a jewel! And you all must know by now that he would want us to treasure each other and have a great time! Maybe you still want to call it the Saturday night special. Well that daughter, Marty, donated \$100 to carry on this great tradition. A trophy was donated in memory of "OLE" Olson and \$100 was added to the prize fund. Seventy-eight players took part in this event, 20 prizes were awarded, and the return rate was 138%. **EGON KOCH** of Surrey, BC, CAN was on fire and turned a real solid 17-8-123 to claim first prize of \$140 and first-place Q of \$115. That's a total of \$255 with \$10 entry fees. That first place trophy was something to brag about too. Hot on his heels was **BOB CHRISTIE** Tillamook, OR. Second prize had a combined value of \$215. Others to score well in this event were: **KENT LA RUE** Crescent City CA 3<sup>rd</sup> \$190; **MIKE HALL** Centralia WA 4<sup>th</sup> \$160; **JIM MERRIMAN** South Colby, WA 5<sup>th</sup> \$135 (didn't have to change a thing on this line except for the first name as **BARBARA MERRIMAN** was in this spot last year); and **DUANE TOLL** Franklin, WI 6<sup>th</sup> \$110. **DON BLANFORD** of the **Chehalis-Centralia Cribbage Club** claimed the final spot with his 12/6/12 effort. Thanks for making "OLE" OLSON special.

**Harry's Westside Klub #1 in Tigard, OR** had a very unusual night on January 12th. They had eleven players, which included one sit out. After playing their last game this is what the results looked like: The following players ended the night with an 11/5 scorecard: David Magee OR 2217, Armon McDowell OR 2266, Steve Hutcheson OR 2542, Frank Medgin OR 2387, Clarence Cole OR 2959, Charlotte Dietterich OR 3068 and John Furler OR 585. The following players had a 10/5

**scorecard:** Paul Hirschmann OR 1868 and Doris Mayfield OR 3265. Lyle Kendall OR 3260 had a 10/4 **scorecard**. Ralph Jensen had a 2/1 card. A total of 11 players were entered for this tournament. 7 out of 11 players had an 11/5; there were three 10-point cards and one 2-point card. Seven people received points. All in a very unusual distribution of game points!

**Bryan Bordenik & Jay Fulwider** had a very unusual finish to their game at a recent **Sea-Tac Peggery (Club #148 in the Federal Way, WA)** weekly tournament. Brian was 2 pegs from winning and had first count. Jay dealt and needed 13 pegs to get out. Bryan led with a 7 and Jay played an 8 for fifteen two. Bryan played another 7 and Jay played a 9 for 31 and a run of 3 (5 more points). Bryan led again with the next 7 and Jay played another 8 for fifteen two. Bryan played the last 7 and Jay played another 9 for 31 and a run of 3 (5 points and out for the win). Bryan told Jay later that he kept the four 7's to pick up the \$ 5 bonus hand. Jay finished first for the night. Bryan was also in the money and did end up with the \$ 5 bonus.

News from **Club 204, The Kitsap Peggery in Olalla, WA:** Boy what a night! We received record number of players, 40! **Samuel Skates** received a 29 hand while playing **Barbara Corradi**, this was Sam's first 29 hand, and he is a great supporter of club 204 in Olalla Washington! The bonus hands were moving around the tables quite a bit tonight with all of these players with the last one holding one of the cards receiving a \$5.00 bonus. Our Club pays out 1 cash prize for every 3 participants so there are always lots of winners! **Dave Grayson** announced that anyone that brought a new player to the club in the future and got them to sign up in the ACC and the grass roots that same night would receive free admission the following game night!

This could fall under "TOO STRANGE TO BE TRUE". At the regular crib nite of the **Boise Peggery, Grass Roots 202.... Spanky (Douglas Hadley Jr)**, turned in his 9 game score sheet, and had not won a game - all zeros. A few minutes later **Doug Hadley father of Spanky**, turned in his score card declaring that only a great cut got him a 24 hand that saved him from losing his ninth game. He had lost the first 8 games and was one loss away from a string of Pearls. Almost two in the same family on the same night!

**Club 23 news:** **Sue Edwards** and **Don Christensen** were playing Sat January 24th at their club in **Denver**. They both had 24 hands in the same game they were playing using 4's 5's and 6's.

**Grass Roots 29 Hands:** September 1st through January 31<sup>st</sup> have produced ten 29 hands for Grass Roots players. Congratulations to the players listed below who were fortunate enough to get one and good luck to everyone else! There are more 29s waiting to happen! Who is going to be next?!!

David Balch, Sr.	Battle Creek, MI
Dan Betz	Muskegon, MI
Elaine Billow	Statesville, NC
Virgil Freeman	Burbank, CA
Betty Hockaday	Richland, WA
Darlene Johnson	Arden Hills, MN
Marvin Lewis	Norfolk, VA
Ernie Nadile	Somerville, MA
Francis Soderholm	Springfield, VA
Robert Upton,	Kentwood, MI

News from the **Twin City Peggery in Arden Hills, MN (GR Club 240)** **Bill Kachel** has surged into the club lead with 185 points, followed by **Bob Chase** and **Russell Adams**. Bill is playing at a sterling 61.6 winning percentage and was on absolute fire for many weeks in a row to put him among the national leaders. Director **Schaefer** in last month's column predicted a 29 hand soon in his club, and on January 21, **Darlene Johnson** made him look clairvoyant as she got the second one in club history! For good measure, she followed it up with a 28 hand 2 weeks later. So far, five members of club 240 have earned their bronze award this year: **Al Booth, Bob Chase, Earl Fox, Darlene Johnson, & Todd Schaefer**. Now there's some cribbage experience!

**Club 46 in Salem, OR** is full of good news! On 1/29, **Dan Freeburg** was riding high with an 18 card and was edged out of 1<sup>st</sup> place by **Art Copeland's** 18-point card and 2 more plus points! Ouch! **Robin Freeburg** reports the ride home that night was very interesting... ha! Not to be outdone, on 2/12 **Dan Freeburg** took 1st place with a Grand Slam 21/9/+198 card! Way to Go! Dan said he was lucky Art wasn't there! **Bill O'Malley** has won the 2nd quarter race! **Dave Staup** is in the lead in Grass roots points! We also want to welcome many new members to our club, **Joan Kleese, Roger Wiebrecht, Rod Bair, Ione Hadenfeld, Phyllis & William "ratso" Roderick, Jerry Hearsom, & Otmar Borchard**. Club 46 extends a special thanks to two people: **Nancy Lorenz** for her patience, hard work, and diligence in taking care of Club 46 finances this past year and **Paul Hatcher** for his continued involvement in Club 46. Paul's expertise, experience and assistance are greatly valued.

# Tournament Trail

## Upcoming Sanctioned Events

Abbreviation Keys	EF: Entry Fee
	EB: Early Bird
	SatS: Saturday Special
	Cons: Consolation
	DBL: Doubles
	SGL: Singles
	HR: High Roller

### March 12-13, River City Open

Fair Oaks VFW, 8990 Kruthof Way, Fair Oaks, CA 95628. EF: \$65, \$10 Q. \$3 to charity. Cntl bkfst, Sat lunch, snacks, trophy pins. FriDBL, FriSGL, SatS, Cons, LC. Contact: Annett Eiffert, PO Box 3243, Citrus Heights, CA 95611. (916) 721-7473. Co-D: Rolfe Glashan, Karen Shimizu, Jennifer Bolles.

### March 12-14, Canadian St. Patricks Day

Continental Inn, 16625 Stony Plain Rd., Edmonton, AB. T5B 4A8. EF: \$55, \$20 Q. Coffee, donuts. Fri3PM \$10/\$10, FriDBL7PM \$40/team, FriHR7PM \$30/\$10/\$20/\$30, SatS7PM \$20/\$10, Cons, LC. Contact: Duayne Pankiw, 110 15503 106th St., Edmonton, AB T5X 5W7, Canada. (780) 475-5990. Co-D: Shawn Smith.

### March 12-14, Sioux Falls O'Classic

Holiday Inn, 100 E. 8th St., Sioux Falls, SD 57106. EF: \$62, \$10 Q. Lunch. FriEB\$20, SatSGL\$20, All-E\$20, Cons. Contact: Mike Rozeboom, 5405 W. Clay, Sioux Falls, SD 57106. (605) 274-8690. Co-D: Dan Graf.

### March 14, Hawaii Open (Mar.)

St. Louis Alumni Assn., 916 Coolidge St., Honolulu, HI 96826. EF: \$40, no Q. \$2 to charity. Donuts, lunch. Cons. Contact: Tsarkie, 3261 Kilhine Pl., Honolulu, HI 96816. (808) 734-4800. Co-D: Fred White.

### March 14, 11th Tri-Valley Open

VFW, Holliston St., Medway, MA. EF: \$45, \$10 Q. \$2 to charity. Coffee, donuts, lunch. SatDBL7PM, \$30/team, Cons. Contact: Pat Llewellyn, 30 Stone St., Bellingham, MA 02019. (508) 966-1613.

### March 19-21, Chico Open

Eagles, 20th & Mulberry St., Chico, CA 95928. EF: \$60, \$10 Q. Coffee, donuts, Sat. lunch (Sun. lunch avail, small charge). FriDBL7PM\$40/team, SatS\$20/\$10, Cons, LC?. Contact: Bruce Forbes, 4532 Garden Brook Dr., Chico, CA 95973. (530) 899-0844. Co-D: Joe Young (530) 343-4002, Pete Jackson (530) 342-2617.

### March 19-21, 7th Colorado Winter Open

Elks, 2475 W. 26th Ave., Denver, CO 80211. EF: \$65, \$15 Q. Coffee, donuts, lunch. Fri\$20, Sat\$20, Cons. Contact: Roger Wilson, 11386 Grove St., Unit B, Westminster, CO 80031. (303) 254-4870.

### Mar. 19-21, NW Open (Gene Sissel Mem.)

VFW, 2005 Valley Ave., Baker City, OR 97814. EF: \$40, \$10 Q. FriTP3PM, FriDBL, FriHR, Cons. Contact: Steve Palmer, 1560 Indiana Ave. #205, Baker City, OR 97814. (541) 523-3801 or (541) 523-4231.

### March 21, South Shore Open

#### (Leo Horigan Memorial)

KC Club, Pleasant St., Canton, MA 02021. EF: \$50, \$10 Q. \$1 to charity. Coffee, donuts, lunch. Cons. Contact: Jim Ready, 67 Pearl St. Place, Stoughton, MA 02072. (781) 344-0417. Co-D: John Rooney, John Brennan.

### March 19-21, Burnaby Winter Open

RCL #148, Burnaby, 4356 Hastings St., Burnaby, BC, Canada V5L 2J9. EF: \$40, \$5/10/20 Q's. FriTP2:30PM, FriHR6:30PM, FriDBL7PM, SatS7PM, Cons. Contact: Gordon Reid, 10671 Bird Rd., Richmond, BC V6X 1N4. (604) 241-5711.

### March 26-28, St. Croix Classic

St. Croix Casino, Hwy 8, Turtle Lake, WI 54437. EF: \$55, \$15 Q. Coffee, juice, soda, lunch. Fri8PM, Sat8PM, Leastski, Cons. 24-28-29-GS prizes. Contact: Alan Lindner, 408 West Schofield Ave., Greenwood, WI 54437. (715) 267-7629. Co-D: Vickie Lindner.

### March 26-28, Montana Open

Jokers Wild, Exit 101, I-90, Missoula, MT. EF: \$50, \$10 Q. Coffee, trophies. FriTP3PM, FriDBL, FriHR, SatS, Cons, Team, 28-29 pool. Contact: DeLynn Colvert, PO Box 5604, Missoula, MT 59806. (406) 543-6855. Co-D: Sharon Hejmanek (406) 549-2843.

### March 27, Who's The King

FOE 3306, 2355 W. Sherman Blvd., Muskegon, MI. EF: \$30, \$5 Q. Donuts, coffee, lunch avail. Cons. Limited seating, register by 3/20. Contact: Dale Teryn, 2874 Blair, Muskegon, MI 49445. (231) 766-3243.

Email: dbetz@remc4.k12.us

### April 2-4, 9th Winnemucca Spring

Convention Ctr, 50 Winnemucca Blvd., Winnemucca, NV 89446. EF: \$50, \$10/\$10 Q. Coffee, pastries, raffle. Fri3PM\$10, FriDBL6:30PM\$40/team, FriHR7PM\$50/\$50, Cons, LC. Contact: Heidi Glashan, 11 Valley Dr., Pittsburg, CA 94565. (925) 432-4277. Co-D: Sharon Hejmanek.

### April 2-4, Mick Michaelis Classic

River Front Inn, 1821 Riverside Dr., Marinette, WI 54143. (1-800-338-3305). EF: \$60, \$15 Q. Lunch. FriTP3PM\$10, Fri8PM\$20, Fri 1-gm elim, SatS7:30PM\$20, Cons. Contact: Gene & Aggie Mikulsky, 7620 Lower Rd., Sobieski, WI 54171. (920) 822-5394.

### April 2-4, Haines City Inaugural

Hospitality Inn, 2145 E. Irlo Bronson Mem. Hwy, Kissimmee, FL 34744. EF: \$55, \$20 Q. Coffee, donuts. Fri7PM, Sat7PM, Cons, LCSun2PM. Contact: Ray Wanke, 1983 Boggy Creek Rd., A-18, Kissimmee, FL 34744. (727) 492-0344. Co-D: John Grob, Nancy Wanke.



**April 4, Eastern States Open**

Maironis Park, 50 S. Quinsigamon Ave., Shrewsbury, MA 01545. EF: \$50, \$10 Q. \$1 to charity. Coffee, donuts, lunch. Cons. Contact: Bill Medeiros, 33 Harvey St., Thomdike, MA 01079. (413) 284-1064. Co-D: Sharlene Medeiros.

**April 9-10, Washington State Open**

Eagles, 100 E. South Hill, Sunnyside, WA 98944. EF: \$55, \$10 Q. Coffee, donuts. FriEB\$10, FriDBL\$50, FriHR\$50/\$50, Cons. 100% paybacks. Contact: James Morrow, 313 N. 15th St., Sunnyside, WA 98944. (509) 837-4224. Co-D: Linda Johnson, Toni Morrow.

**April 16-18, Oregon Championship****24th Joe Nelson Memorial**

Elks, 151 N. Main, Prineville, OR 97754. EF: \$60, \$10 Q. Coffee, cookies, Sat. lunch. \$4 to charity. FriTP3PM\$10/\$10, FriDBL7PM\$50/team, FriHR7PM\$50/\$50, SatS\$10/\$10, Cons. Contact: Graeme Gossett, 15852 S. Yakima, Prineville, OR 97754. Co-D: Patti Dahms.

**April 18, 10th Blackstone Valley**

Knights of Columbus, 500 Pleasant St., Canton, MA 02021. EF: \$45, \$10 Q. Coffee, lunch. \$1 to charity. Cons. Contact: Shawn Jordan, 114 Chapel St., Norwood, MA 02062. (781) 769-1061.

**April 16-18, Atlanta Classic**

Holiday Inn Atlanta Airport S., 6288 Old Dixie Hwy, Jonesboro, GA 30236 (770) 968-4300. EF: \$62, \$20 Q. Lunch Sat., Fri7PMDBL \$50/team/\$20Q, SatHR7PM \$50/\$20Q, SatS \$30/\$15Q, Cons. Limited to first 72 entrants. Contact: Gene Bradshaw, 120 St. Andrews Walk, Sharpsburg, GA 30277. (770) 463-9946. Co-D: Mattie Bradshaw.

**April 16-18, Western New York Open**

Quality Hotel, 240 Rainbow Blvd., Niagara Falls, NY 14303. 14303. EF: \$45, \$15 Q. Coffee, donuts, lt. lunch. FriEB, SatDBL, Cons. Contact: Nelson Wheaton, 76 Raymond St., Hamburg, NY 14075. (716) 649-3462. Co-D: Richard Schurkus.

**April 17, 4th Tax Relief**

Alamo Women's Club, 1401 Danville Blvd., Alamo, CA 94507. EF: \$60, \$10 Q. Coffee, donuts, lunch. Cons. Contact: Mary Herrmann, 2032 Golden Rain Rd. #12, Walnut Creek, CA 94595. (925) 935-3325. Co-D: Augie Murray (925) 437-4809, Al Moy (925) 284-7044.

**April 18, Hawaii Open (April)**

St. Louis Alumni Assn., 916 Coolidge St., Honolulu, HI 96826. EF: \$40, no Q. \$2 to charity. Donuts, lunch. Cons. Contact: Tsarkie, 3261 Kilhune Pl., Honolulu, HI 96816. (808) 734-4800. Co-D: Fred White.

**April 18-24, Copper Canyon Open**

Copper Canyon Tour. EF: \$60, \$20 Q. Coffee, pastries. Daily events while on tour. Cons. Limited to first 30 players. See Apr. CW, page 9 for details. Contact: David O'Neil, 1069 Texel Lane, Clarkston, GA 30021. (404) 296-4689.

**April 23-25, Milwaukee Challenge**

Radisson Hotel Airport, 6331 S. 13th St., Milwaukee, WI 53221. EF: \$60, \$20 Q. Lunch. Fri8PM\$20, Sat7:30PM\$20, Cons. LC. Contact: Marlene Lazechek, 8102 Legend Dr., Franklin, WI 53132. (414) 427-4595 (H), (414) 933-6970 (W). Email: marlemae@msn.com

**April 23-25, Greater Hermiston Open**

Eagles, 160 NW 2nd St., Hermiston, OR 97838. EF: \$50, \$10 Q. Coffee, donuts. \$1 to charity. FriDBL7PM\$50/team, FriHR7PM\$100, SatCalcutta7PM, SatS7:30\$20, Cons. Contact: Denny Edwards, PO Box 763, Hermiston, OR 97838. (541) 567-3336.

**April 24, Alaska Springtime Open**

American Legion, 840 W. Fireweed, Anchorage, AK 99503. EF: \$30, no Q. 10% to charity. Cons. Contact: Dave Schwartz, 3630 Burl Ct., Anchorage, AK 99504. (907) 522-4927. Co-D: Heather Brean (907) 338-5847.

**April 25-May 2, Pacific Coast Open, Homeward Bound (2 sanctioned events)**

Carnival Pride Cruise Ship, Depart Long Beach, CA on April 25. EF: Apr 26: \$47, \$10 Q w/Cons Tue Apr 27. Other cribbage events scheduled. Contact: Roy Cook, 3617 Frenzel Cir., Oceanside, CA 92056. (760) 967-7351. Co-D: Sharon Fly (760) 438-4885. Homeward Bound Event May 1 \$35, \$10 Q: Shelley Berman, 126 Rea Ave., El Cajon, CA 92020. (619) 444-7655. Cruise info: Gwen (800) 869-8321.

**April 25, Ken Vetterline Memorial**

Holiday Inn, 81 Riverside St., Portland, ME 04103. EF: \$55, \$10 Q. Coffee, lunch. SatDBL7:30PM \$40/team, Cons. Contact: David Campbell, 1321 North Rd., Parsonfield, ME 04047. (207) 793-43767. Co-D: Bill Medeiros.

**April 30-May 1-2, Oregon Coast Classic**

Chinook Winds Casino, 1777 NW 44th, Lincoln City, OR 97367. EF: \$46.50, \$10 Q. Coffee, soft drinks. FriTP2PM, FriDBL7PM, FriHR7PM, Cons. \$1,000 added by Chinook Winds. Contact: Jeanne & Roy Hofbauer, 30937 NE 23rd St., Washogal, WA 98671. (360) 835-3623. Co-D: Rollie Heath (541) 994-9658, Bernie Nelson (503) 965-6410.

**May 2, Ocean State Classic**

LeFoyer Club, 151 Fountain St., Pawtucket, RI 02861. EF: \$35, no Q. Coffee, danish, lunch. Cons. Contact: John Chambers, PO Box 40068, Providence, RI 02940. (401) 831-4157. Co-D: Ron Nelson, Tom Tobin.

**May 7-9, Capital City Open (new location)**

Best Western Kelly Inn (651) 227-8711, 161 St. Anthony Ave., St. Paul, MN 55103. EF: \$60, \$15 Q. Lunch. Fri8PM\$20, SatS7:30PM\$20, Cons. LC\$20. Contact: Todd Schaefer, 1132 Greystone Ave. N., Oakdale, MN 55128. (651) 699-5878. Co-D: Diane Waite.

**May 8, Channel Islands Open**

Ventura Elks, 11 Ash St., Ventura, CA. EF: \$55, \$20 Q. Coffee, donuts, fruit, lunch. Cons. Contact: Cy Madrone, PO Box 40307, Santa Barbara, CA 93140. (805) 961-1733. Co-D: Clint Deisenroth (805) 241-8805.

**May 14-16, North Carolina Open**

Holiday Inn-Airport, 6426 Burnt Poplar Rd., Greensboro, NC 27409. EF: \$60, \$20 Q. Coffee, donuts, lunch. FriEB\$20, SatS\$20, SatHR\$60, Cons. LC. Contact: Henry Douglass, 726 Russell Ave., Reidsville, NC 27320. (336) 349-7581.

**May 14-16, California North Coast Classic**

Best Western Ship Ashore Resort, 12370 Hwy 101 North, Smith River, CA 95567. EF: \$60, \$10 Q. Coffee, donuts, fruit. FriTP3PM\$10, Fri7PM\$20 (\$10 & \$30Q), SatS7PM\$25, \$10Q. Cons. LC? Contact: Jack Shumate III, 265 Lexington Ct., Crescent City, CA 95531. (707) 465-8915. (Ocean view, 10% room discount, say "cribbage").

**May 16, Hawaii Open**

St. Louis Alumni Club House, 916 Coolidge St., Honolulu, HI 96826. EF: \$40, no Q. \$2 to charity. Pastries, lunch. Cons. Contact: Tsarke, 3261 Kilihune Place, Honolulu, HI 96816. (808) 734-4800. Co-D: Fred White.

**May 14-16, Carter Classic**

Indian Springs Lodge, 670 Hwy 32, Wabeno, WI 54566. EF: \$60, \$15 Q. Breakfast (2 days), Sat. lunch. Casino perks. Fri3PM\$10, FriEB7:30PM \$20, SatS \$20, Cons. Contact: Robert & Dottie Culver, 17522 Dencur Ct., Townsend, WI 54175. (715) 276-6578.

**May 21-23, Potawatomi Peggys Pow Wow**

Park Inn, 4290 Red Arrow Hwy, Stevensville, MI. EF: \$60, \$20 Q. Fri7:30PM \$20, Sat7:30PM \$20, Cons. LC, cookie lady. Contact: Joy & Jeff Shimp, 13723 Lincoln St., Grand Haven, MI 49417. (616) 850-9229.

**May 21-23, Diamond Mountain Peggys**

Diamond Mountain Casino, 900 Skyline Dr., Susanville, CA. EF: \$60, \$10 Q. Coffee, donuts, lunch, trophies. FriTP3PM, FriDBL7PM, SatHR7:30PM, Cons. SatS7PM. Contact: Peggy Scalley, PO Box 295, Janesville, CA 96114. (530) 253-2655.

**May 22-23, Spring US Open**

West Covina Elks, 841 W. Merced, W. Covina, CA 91790. EF: \$60, \$15 Q. Coffee, donuts, lunch, trophies. Cons. Limited to first 70. Contact: Norm Nikodym, 2132 S. Wisteria Ct., Ontario, CA 91761. (909) 986-9454. Co-D: Beverly Castillo (562) 305-3040.

**May 23, 24th Connecticut Championship**

Rockville Elks, 9 N. Park St., Rockville, CT 06066. EF: \$50, \$10 Q. Coffee, donuts, lunch. Cons. Entry deadline May 17, no walk-ins. Contact: Bill Richmond, 72 Sunset Rd., Newington, CT 06111. (866) 666-4794. Co-D: Bob Fitzgerald, Joan Fletcher.

**May 28-30, Greater Spokane Valley**

Eagles, E 16801 Sprague Ave., Spokane, WA. EF: \$50, \$10 Q. \$2 to charity. Fri3PM, FriDBL, FriHR, SatS, Cons. Contact: Betty Johnson, E. 7317 2nd Ave., Spokane, WA 99217. (509) 928-8404. Co-D: Bruce Denend, (509) 325-3061, Estalita Ellis (208) 437-4015.

**May 28-30, Nugget Classic**

Senior Ctr., 877 Nunneley Rd., Paradise, CA 95969. EF: \$60, \$10 Q. Coffee, catered lunch, Sun buffet, snacks. FriEB, SatS, HR, Cons. LC. Contact: Jerry Moore, 1473 Patrick Dr., Paradise, CA 95969. (530) 877-1477. Co-D: Bruce Forbes (530) 899-0844.

**May 29, Appleton "That's a Gol"**

Columbus Club, 2531 N. Richmond, Appleton, WI 54911. EF: \$45, \$20 Q. Lunch. Cons. Contact: Kristina Rouse, 1031 E. Marquette St., Appleton, WI 54911. (920) 954-1736. Co-D: Frank Danielski.

**June 5, Summer US Open**

West Covina Elks, 841 W. Merced, W. Covina, CA 91790. EF: \$40, \$10 Q. Coffee, donuts, lunch, trophies. Cons. Limited to first 70. Contact: Norm Nikodym, 2132 S. Wisteria Ct., Ontario, CA 91761. (909) 986-9454. Co-D: Beverly Castillo.

**June 4-6, Mt. St. Helens Classic**

Moose Lodge, 921 Washington Way, Longview, WA 98632. EF: \$60, \$10 Q. \$2 to charity. Coffee, donuts, lunch. FriTP3PM, FriHR6:30PM\$50/\$50, FriDBL\$50/team, SatS\$20/\$10, Cons. Contact: Chris McComas, 2217 Tower Rd., Castle Rock, WA 98611. (360) 274-8129.

**June 4-6, St. Croix Classic**

St. Croix Casino, 777 Hwy 8, Turtle Lake, WI 54889. EF: \$55, \$15 Q. Juice, soda, coffee, lunch. Fri8PM\$20, Sat8PM\$20, Cons. 24-28-29, GS perks. Contact: Alan Lipner, 408 W. Schofield Ave., Greenwood, WI 54437. (715) 267-7629.

**June 6, Western Massachusetts Classic**

Dante Club, 1198 Memorial Ave., W. Springfield, MA 01089. EF: \$50, \$10 Q. (Equal). \$1 to charity. Cons. Contact: Phyllis Schmidt, 95 Nutmeg Lane, Williamstown, MA 01267. (413) 458-8693. Co-D: Isabel Hyndman.

**June 9-10, Alberta Mid-Week**

Veteran's Club, 12611 127th St., Edmonton, AB T5L 1A4, Canada. EF: \$52, \$10 Q. Wed7PM\$20/\$10. Cons. Contact: Doris Sanders, 7 Steele Crescent, Edmonton, AB T5A 1G4, Canada. (780) 478-8488. Co-D: Audrey Hatto (780) 465-9733.

**June 11-13, Alberta Open**

Continental Inn, 16625 Stony Plain Rd., Edmonton, AB T5B 4A8, Canada. EF: \$62, \$20 Q. Coffee, donuts, trophies. FriTP3PM, FriDBL7PM, FriHR7PM, SatS, Cons. LC. Contact: Harold Buckley, 52526 Range Rd. 270, Spruce Grove, AB, Canada. (780) 962-5083. Co-D: Doris Sanders (780) 478-8488.

**June 11-13, Cascade Classic**

VFW, Sisters Ave., Redmond, OR 97756. EF: \$40, \$10 Q. \$3 to charity. FriTP3PM\$10, FriHR6:30PM\$50/\$50, FriDBL7PM\$50/team, SatS7PM\$10/\$10, Cons. Contact: Liz Stockdale, PO Box 6291, Bend, OR 97708. (541) 317-9022. Co-D: Lucille Endicott, Anne Haller.

**June 13, Hawaii Open**

St. Louis Alumni Assoc., 916 Coolidge St., Honolulu, HI 96826. EF: \$40, no Q. Donuts, lunch. \$2 to charity. Cons. Contact: Tsarkie, 3261 Kilihune Pl., Honolulu, HI 96816. (808) 734-4800. Co-D: Fred White.

**June 18-20, Capital City Classic**

Ramada Inn North, 5055 Merle Hay Rd., Johnson, Iowa 50131. EF: \$60, \$20 Q. Lunch, coffee. Fri\$20, Sat\$20, Cons. spin wheel (20), side pools. Contact: Dick Ogden, PO Box 35211, Des Moines, IA 50315. (515) 285-6106. Co-D: John Crouch.

**June 19, California Championship**

Veteran's Memorial Bldg., 1351 Maple Ave., Santa Rosa, CA 95404. EF: \$60, \$10 Q. Coffee, donuts, snacks, lunch. Cons. Contact: Avon Ray, 21 Estrella Dr., Santa Rosa, CA 95403. (707) 546-8967. Co-D: Craig Ross (530) 265-6497.

**June 25-27, Schaefer Shuffle**

Kettle Morraaine Bowl, Hwy 60, Slinger, WI 53086. EF: \$60, \$15 Q. Lunch. Fri\$20, Sat\$20, Cons. LC. Contact: Al Schaefer, N162W20333 Butternut Lane, Jackson, WI 53037. (262) 677-9766, Co-D: Sharon Schaefer.

**June 26, Saturday Open**

Nashua Elks, 120 Daniel Webster Hwy S., Nashua, NH 03060. EF: \$50, \$10 Q. Coffee, donuts, lunch. Cons. Register by June 21. Contact: Henry Bergeron, 1466 Battle St., Webster, NH 03303. (603) 648-6633. Co-D: Paula Bergeron.

**June 27, Baltimore Summer Special**

Golden Dragon, 8109 Liberty Rd., Baltimore, MD 21207. EF: \$50, \$20 Q. Coffee, donuts, lunch. 50-50 raffle (MS). SatEB7PM, Cons. Contact: Bruce Sattler, 3732 Foxford Stream Rd., Baltimore, MD 21236. (410) 371-8954. Co-D: Steve Sattler. bdsbalto@aol.com

**July 2-4, Independence Day Classic**

Sands Regency, 345 N. Arlington Ave., Reno, NV 89501. EF: \$51.50, \$10 Q. \$7.50 to vets. Coffee, donuts. FriSGL\$35, Cons. SunLC\$20. Contact: Bill & Dorthalee Irons, 333 K. St., Sparks, NV 89431. (775) 358-4916. Co-D: Roberta Huff.

**July 9-11, Lewis & Clark Classic**

Grandpa's Garage, 31846 65th Ave. Way, Cannon Falls, MN 55009. EF: \$60, \$20 Q. Lunch. Fri\$20, Sat\$20, All-E\$20, Cons. Contact: Scott Koolstra, 11004 Edgewood Ave. N., Champlin, MN 55316. (763) 424-9717.

**July 10, Truckee River Classic**

North Tahoe Community Ctr, 8318 North Lake Blvd., Kings Beach, CA 96143. EF: \$56.50, \$10 Q. Coffee, donuts, fruit, candy. Cons. Contact: Ron Morgan, PO Box 80, Loyalton, CA 96118. (530) 993-4275. Co-D: Greg Schleusner (530) 587-7339.

**July 9-10-11, Burnaby Summer Open**

Royal Canadian Legion, 4356 Hastings St., Burnaby, BC V5C 2J9. EF: \$40, many Q's \$1 to charity. Coffee, cookies. FriTP3PM\$10, FriHR7PM\$25, FriDBL7PM, Sat\$15, Cons. LC\$10. Contact: Gordon Reid, 10671 Bird Rd., Richmond, BC V6X 1N6, Canada. (604) 241-5711.

**July 11, Hawaii Open**

St. Louis Alumni Club House, 916 Coolidge St., Honolulu, HI 96826. EF: \$0, no Q. \$2 to charity. Donuts, lunch. Cons. Contact: Tsarkie, 3261 Kilihune Place, Honolulu, HI 96816. (808) 734-4800. Co-D: Fred White.

**July 16-18, Devil Mountain Caper**

Antioch Sr. Ctr., 415 W. 2nd St., Antioch, CA 94509. EF: \$65, \$10 Q. \$4 to charity. Cont. bkfst, Sat. lunch. FriSGL, FriDBL, SatS, SatHR, Cons. Contact: Mary Gladish, 833 Barney Ave., Concord, CA 94578. (925) 798-0329. Co-D: Bob Clark, Anne Sheeran.

**July 16-18, 1st Emerald Valley Open**

Elks, 1701 Centennial Blvd., Springfield, OR 97477. EF: \$60, \$10 Q. Coffee, donuts, lunch. FriHR6:30PM \$100, FriDBL7PM \$50/team, SatS7PM, Cons. Contact: Mike McDanael, 885 Anderson Lane, Springfield, OR 97477. (541) 736-1363. Co-D: Winona Johnson.

**July 23-25, Portland Open**

Ramada Inn, 6221 NE 82nd, Portland, OR 97220. EF: \$55, \$10 Q. Lunch. FriTP3PM, FriHR, FriDBL, SatS, Cons. LC. Contact: Ken Julkowski, 2819 SE 58th, Portland, OR 97206. (503) 788-6907.

**July 30-Aug.1, Martin-McLeod Open**

Elks, 150 S. Shasta, Willows, CA 95988. EF: \$60, \$10 Q. \$5 to charity. Juice, coffee, donuts, lunch, free rice. FriEB, SatS, Cons. LC. Contact: Mike Beason, 205 S. Culver Ave., Willows, CA 95988. (530) 934-5223. Co-D: Bill Wakeman (510) 276-1600.

**July 23-26, National Open**

Hilton North Raleigh, 3415 Old Wake Forest Rd. Raleigh, NC 27609. EF: \$70, \$20 Q. Lunch, coffee. FriEB, SatS, Sun Losers/losers, Mon LastRoudup, MonHR. Dbl elim match play (Main). Contact: Catherine Perkins, 1030 Barker Rd., (PO Box 171), Bear Creek, NC 27207. (919) 837-5790. Co-D: Howard Baum, Jerry Gooden, Henry Douglass, Russ Perkins.

**August 6-8, St. Croix Classic**

St. Croix Casino, 777 Hwy 8, Turtle Lake, WI 54889. EF: \$55, \$15 Q. Juice, soda, coffee, lunch. Fri\$208PM, Sat\$208PM, Cons. 24-28-29 GS perks. Contact: Alan Lindner, 408 W. Schofield Ave., Greenwood, WI 54437. (715) 267-7629.

**Aug. 6-6, Masters Mid-Week Chal. II**

Eagles, 100 E. South Hill Rd., Sunnyside, WA 98944. EF: \$55, \$10 Q. Coffee, donuts. Thurs\$10/\$10Q, Cons. 100% payback. Contact: Bob Brumley, 1101 Lester, Sunnyside, WA 98944. (509) 839-6323. Co-D: Mike Brooks, James Morrow.

**August 6-7-8, Legends Classic**

Legends Casino, Toppenish, WA 98948. EF: \$55, \$10 Q. Coffee, contbktst. FriTP3PM, FriDBL\$50/team, FriHR\$50/\$50. SatS, Cons. 100% paybacks. Contact: James Morrow, 313 N. 15th St. S, Sunnyside, WA 98944. (509) 837-4224. Co-D: Cher Morrow, Bon Brumley.

**August 6-8, 7th Humboldt Bay Classic**

Mad River Rapids RV Rec. room, 3501 Janes Rd., Arcata, CA 95521. EF: \$50, \$20 Q. \$3.50 to charity. Bagels, coffee, donuts, fruit, snacks. FriHR6:30PM \$50/\$25 playoffs, FriPMDL \$40/team, SatS7PM \$20/\$10, All-ES\$10. Cons. Limited to first 100. Contact: Herschel & Rickie Mack, 581 School Rd., McKinleyville, CA 95519. (707) 839-0249. Co-D: Barrett Mace (707) 445-0703, Julie Mack-Felkins.

**August 6-8, Cowboy Country Open**

American Legion, 2001 E. Lincolnway, Cheyenne, WY 82001. EF: \$65, \$15 Q. \$3.50 to charity. Coffee, cookies, lunch. FriEB, SatS, Cons. Contact: Charlie Douthit, 840 Oakhurst Dr., Cheyenne, WY 82009. (307) 634-1672.

**August 13-15, Mt. Bachelor Challenge**

Elks, 70 NW Newport Ave., Bend, OR 97701. EF: \$50, \$10 Q. FriTP3PM\$10/\$10Q, FriDBL\$50/team FriHR\$50/\$50, SatS\$10/\$10Q. Cons. Contact: Jerry & Carolyn Blackman, 611116 Deer Valley Dr., Bend, OR 97702. (541) 385-5725. Co-D: Paul Hatcher.

**August 14, Richmond Classic**

Holiday Inn Crossroads, 2000 Staples Mill Rd., Richmond, VA 23230. EF: \$60, \$20 Q. Coffee, donuts, Sat. lunch. Fri7:30PM \$20, Sat7:30PM \$20, SatHR7:30PM \$50, Cons. Contact: Rick Allen, 3013 Landria Dr., Richmond, VA 23225. (804) 323-7476. Co-D: Janet Meinert.

**August 15, Hawaii Open (August)**

St. Louis Alumni Assn., 916 Coolidge St., Honolulu, HI 96826. EF: \$40, no Q. \$2 to charity. Donuts, lunch. Cons. Contact: Tsarkie, 3261 Kilihune Pl., Honolulu, HI 96816. (808) 734-4800. Co-D: Fred White.

**August 20-22, Oregon Trail Classic**

Eagles, 2006 W. 7th St., The Dalles, OR 97058. EF: \$46, \$10 Q. \$1 to charity. Fri3PM \$10/\$10, FriDBL \$50/team, FriHR6:30PM \$50/\$25, SatS \$10/\$10. Cons. Contact: Marilyn Hilton, 1837 Tucker Rd., Hood River, OR 97031. (541) 386-2036.

**August 20-22, New England Peer Champ.**

Best Western (f. Ramada), 624 Southbridge St. Rte. 12, Auburn, MA 01501. EF: \$52, \$20 Q. Coffee. FriS, SatDBL, Cons. Seating by peer MRP's. Contact: John Chambers, PO Box 40068, Providence, RI 02940. (401) 831-4157.

**August 28, Solano August Sizzler**

Dixon May Fair, 655 South First St., Dixon, CA 95620. EF: \$55, \$10 Q. \$1.50 to charity. Coffee, bagels, donuts, juice, lunch. Cons. Contact: Julie Mack-Felkins, 171 W. Chestnut St., Dixon, CA 95620. (707) 678-8986. Co-D: Cecil Felkins (707) 678-8986.

**Sept. 10-12, C. d'Alene Casino Fall Classic**

Coeur d'Alene Casino, Hwy 95, Worley, Idaho. EF: \$50, \$10 Q. FriTP3PM, FriHR, FriDBL, SatS. Cons. Contact: Betty Johnson, E7317 2nd Ave., Spokane, WA 99212. (509) 928-6404. Co-D: Bruce Denend (509) 325-3061, Estalita Ells.

**September 11, Wine Country Open**

Veteran's Home, Lincoln Bldg., 2nd floor, Yountville, CA 94599. EF: \$55, \$10 Q. \$1.50 to charity. Coffee, donuts, lunch avail. Cons. GR Nat. Sunday (18 games). Limited to first 96. Contact: Roland Hall, 4026 Heather Lane, Napa, CA 94558. (707) 253-8168. Email: rolandh29@hotmail.com

**September 12, Hawaii Open (Sept.)**

St. Louis Alumni Assn, 916 Coolidge St., Honolulu, HI 96826. EF: \$40, no Q. \$2 to charity. Cons. Contact: Tsarkie, 3261 Kilihune Pl., Honolulu, HI 96816. (808) 734-4800. Co-D: Fred White.

**September 16-19, Grand National XXIII**

Westin Atlanta Airport, 4736 Best Rd., Atlanta, GA 30337. EF: \$70, \$20 Q. Coffee, Sat. lunch. Thur8PM, English rules, Fri2PM \$20, Fri8PM \$20, FriHR7:45PM \$50, SatS7:45PM \$50, Sat8PM \$20, Cons, LC \$20, Awards Banquet Sat. Contact: Dave O'Neil, 1069 Texel Ln., Clarkston, GA 30021. (404) 296-4689. Co-D: Bobby Stuart, Gene Bradshaw.

**Sept. 24-26, 5th Winnemucca Fall**

Convention Ctr., 50 W. Winnemucca Blvd., Winnemucca, NV 89446. EF: \$50, \$10/\$10Q. Coffee, danish, donuts. FriTP3PM \$10, Fri7PM DBL \$50/team, Fri7PM HR \$50/\$50. Cons, LC. Contact: Heidi Glashan, 11 Valley Dr., Pittsburg, CA 94565. (925) 432-4277. Co-D: Sharon Hejrtmanek.

**October 9, Feather River Open**

Eagles, Montgomery at Myers, Oroville, CA 95966. EF: \$55, \$10 Q. \$5 to charity. Coffee, donuts, lunch. Fri\$20/\$10, Cons. \$5 late fee after Oct.1. Contact: Tom & Vaida Stevens, 1130 Mt. Ida Rd., Oroville, CA 95966. (530) 589-2192.

**October 15-17, 5th Crescent City Open**

Del Norte Co. Fairgrounds, 421 Hwy 101 N., Crescent City, CA 95531. EF: \$50, \$10 Q. Coffee, donuts. Fri3PM\$10, Fri6:30PMHR, FriDBL7PM, SatS7PM, Cons. Contact: Jim Waldvogel, 160 Hinky Ln., Crescent City, CA 95531. (707) 464-9168. Co-D: Jerry Cutsforth (707) 464-2808, Vern Ward (707) 464-4510.

**October 22-24, Emerald Coast Open**

Elks, 1335 Hwy 98 E., PO Box 535, Ft. Walton Beach, FL 32548. EF: \$55, \$20 Q. Coffee, lunch. FriS, SatS, Cons, LC? Contact: Martha Sanders, 104 Highland Dr., Ft. Walton Beach, FL 32548. (850) 244-0950. Co-D: David O'Neil.

**October 29-31, Edmonton Open**

Continental Inn, 16625 Stony Plain Rd., Edmonton, AB T5B 4A8. EF: \$52, \$20 Q. Coffee, donuts, trophies. Fri3PM\$10, FriDBL7PM, Sat\$520, Cons, LC. Contact: Harold Buckley, 52526 Range Rd. 270, Spruce Grove, AB. (780) 962-5083. Co-D: Doris Sanders (780) 478-8488.

**October 29-31, 13th Abe Kealoha Extrav.**

St. Louis Alum. Assn., 916 Coolidge St., Honolulu, HI 96826. EF: \$60, no Q. Donuts, coffee, \$2 to charity. FriDBL, Cons. Contact: Tsarkie, 3261 Kilihune Pl., Honolulu, HI 96816. (808) 734-4800. Co-D: Fred White.

**November 4, 1004, Ed's #16 (Teeny Tiny)**

Harry's Hofbrau, 390 Saratoga Ave., San Jose, CA 95117. EF: \$25, no Q. Coffee, donuts, fruit, \$5 for lunch, trophies. Cons. \$500 prize money guaranteed. Contact: Ed Bloom, 22150 Wallace Dr., Cupertino, CA 95014. (408) 245-9777.

**Nov. 12-14, 2004, Veteran's Day Classic**

Sands Regency, 345 N. Arlington Ave., Reno, NV 89501. EF: \$51.50, \$10 Q. \$7.50 to vets. Coffee, donuts. Fri\$35, Cons, SunLC\$20. Contact: Bill & Dorthalee Irons, 333 K. St., Sparks, NV 89431. (775) 358-4916. Co-D: Roberta Huff.

**November 19-21, Minnesota Open**

Grandpa's Garage, 31846 65th Ave. Way, Cannon Falls, MN 55009. EF: \$60, \$20 Q. Lunch. FriEB \$20, Sat\$20, Cons. Contact: Jerry Gruber, 5121 Nokomis Ave. S., Minneapolis, MN 55417. (612) 722-1292. Co-D: Al Booth, (763) 783-7042.

**December 3-5, Reynolds X-Mas Wrap**

Moose Lodge, 20835 Rutledge Rd., Castro Valley, CA 94541. EF: \$60, \$10 Q. Lunch, donuts, coffee, fruit, juice. Fri\$20/\$10, Sat\$20/\$10, Cons. Contact: Bill Wakeman, 15750 Via Cordoba, San Lorenzo, CA 94580. (510) 276-1600.

**Dec. 8, Hawaii Championship 2004**

St. Louis Alum. Assn., 916 Coolidge St., Honolulu, HI 96826. EF: \$60, no Q. \$2 to charity. Cons. Contact: Tsarkie, 3261 Kilihune Pl., Honolulu, HI 96816. (808) 734-4800. Co-D: Fred White.

**Jan. 7-9, 2005, Washington Championship**

Moose Lodge, 1400 Grand Ave., Centralia, WA 98531. EF: \$60, \$10 Q. \$3 to charity. \$4 lunch. FriHT7PM, FriDBL7PM, SatS7PM, Cons, LC. Contact: George "Ras" Rasmussen, 1100 Cobra Lane, Centralia, WA 98531. (360) 807-8392.

**Jan. 7-9, 2005, Peg For The Border III**

Masonic Lodge, 4731 Date Ave., La Mesa, CA 91944. EF: \$55, \$10 Q. Coffee, juice, donuts, lunch. FriEB, Cons. Contact: Shelly Berman, 126 Reh Ave., El Cajon, CA 92020. (619) 444-7655. Co-D: Roz Berman (619) 440-9474 (after 6 PM).

**TOURNAMENT COMMISSIONERS****EASTERN REGION**

**George Bickford (413) 733-9288**

**CENTRAL REGION**

**Joe Bernard (847) 395-7599**

**WESTERN REGION**

**Roy Hofbauer (360) 835-3623**

**CRIBBAGE In The HEARTLAND.**

Calling all cribbage players in Kansas City, MO. and surrounding area, let's get together and start some action. Mike Walker in KC and Ron Hamilton in Topeka are working on setting up a Grass Roots Club and are putting out the call for participants. Pass the word to all your relatives, friends, neighbors and card players in the KC area, and if interested call 816-830-3988, or email [kcpeppersassoc@yahoo.com](mailto:kcpeppersassoc@yahoo.com). This might be the beginning of Grand National XXV(?) tournament. The KC casinos are chopping at the bit to draw in a national crowd. Call or email us today. signed - Mike and Ron

Thanks for your help, and anything you might be able to add or provide to us to start the cards shuffling in KC, would be greatly appreciated. As you know, I have found Kansas pretty sparse of crib players, but now with a local contact in KC, am hopeful we can get something going.

*Ron Hamilton*

*785-435-2186 days*

*785-232-6271 nights*

**In Memoriam****Jo Evans**

Richland, Washington

Jo passed away February 17 after a valiant battle with cancer. A long-time member of the ACC, she graced many Northwest events with her husband, Willie. A great sport and formidable player, she will be sorely missed by her many friends and pegging pals. The ACC has lost a great one.

# GRASS ROOTS LEADERS

## Division 1

Pts	Name	(Club)	St/Prov
211	Duane E. Sink	(107)	MI
203	Ron Gustafson	(304)	BC
200	Art Fisher	(82)	CA
194	Charles R. Barnes	(241)	FL
189	Wayne Glashan	(162)	CA
188	Harold Sontag	(162)	CA
185	William J. Kachel Sr.	(240)	MN
181	Thomas Ballweg	(117)	VA
181	Wendell Arntzen	(39)	WA
177	Harry Langman	(90)	WI
176	Michael Schell	(108)	WA
175	Sue Schenk	(71)	MI
173	Robert West	(34)	CO
173	Elmer G. Rasmussen	(232)	WA
171	James Langley	(159)	CA
171	Alan R. Schaefer	(6)	WI
170	Steve Angier	(119)	GA
169	Gene Hoffman	(25)	MT
169	Mariette Debaugh	(230)	FL
168	Alan J. Lindner	(199)	WI
165	David Fournier	(22)	FL
161	Dale G. Vincent Sr.	(61)	WI
161	Dianne Leduc	(309)	B.C.
160	James Hombacher	(266)	WA
160	Kathy Thompson	(25)	MT
159	Tad Pilecki	(54)	CA
158	Peter Setian	(72)	MA
157	Ronald L. Morgan	(11)	NV
157	Robert W. Wahlgren	(301)	MA
155	Lloyd Stinson	(243)	WA
153	Jim Crawford	(48)	CA
153	Don Bakko	(232)	WA
153	Phil Homrich	(71)	MI
153	Phil Martin	(26)	CT
152	Lee Lamarr	(199)	WI
151	G. Barrett Mace	(194)	CA
150	Chris McComas	(232)	WA
150	Harold Lund	(218)	MI
150	Wayne Steinmetz	(6)	WI
150	Albert Moy	(290)	CA
150	Keith E. Widener	(221)	NC
149	David Gerke	(300)	MI
148	Pat H. Farris	(162)	CA
148	Ronald L. Hoglund	(257)	CA
147	Jay Goldfarb	(257)	CA
147	Allen Nypen	(297)	OR
145	Don Bachman	(118)	OR
145	Lowell W. Bailey	(266)	WA
144	William MacDonald	(207)	CA
144	Ms. Jerry Russell	(144)	GA
142	Gary Louderback	(243)	WA
139	Paul C. Barnes	(230)	FL
139	Jeanne Daesch	(241)	FL
139	Jim Lunder	(22)	FL
139	Annett J. Eiffert	(162)	CA
139	David A. Peterson	(218)	MI
138	Denny Edwards	(2)	OR
138	Milton Caro	(276)	FL

## Division 2

Pts	Name	(Club)	St/Prov
140	Howard Pearson	(96)	SD
126	Tom Lewis	(271)	NM
122	Ray Kranz	(271)	NM
110	Ralph Haynes	(219)	NH
108	Paul S. Yellon	(227)	CA
108	Louise Streeter	(219)	NH
102	Thomas E. Smith	(219)	NH
97	Tom Bombaci	(245)	NM
95	Thomas (Noel) Mancbach	(140)	CA
94	Kenneth G. Miller	(227)	CA
90	Susie Jenkins	(271)	NM
89	Bruce V. Forbes	(249)	CA
89	David Hubsch	(245)	NM
88	Joanne Hughes	(271)	NM
86	Delia Doffin	(245)	NM
86	Walter D. Olsen	(27)	CA
85	Amelee Killion	(27)	CA
85	John Bakeberg	(96)	SD
84	Robert L. Gillette	(154)	CA
84	Stanley A. Mullins	(219)	NH
84	Leroy Schecher	(96)	SD
83	Mel Melliger	(271)	NM
83	Stan Gentile	(271)	NM
79	Thomas Borkowski	(97)	MI
78	Bobby G. Stuart	(74)	GA
78	Wendell Woodard	(219)	NH
77	Keith Cieslinski	(97)	MI
76	Ray Quinn	(96)	SD
75	Richard F. Bett Sr.	(5)	NY
74	Michael Morgan	(106)	TX
73	Betty Lou Bowen	(38)	OR
73	Virgil Dulin	(35)	NC
71	Carroll S. Johnson	(154)	CA
71	Goldia Rager	(86)	CA
71	John Mock	(27)	CA
71	Richard Scott Corbin	(106)	TX
71	Tom P. Anderson	(38)	OR
70	Patricia Mariette	(271)	NM

## Division 3

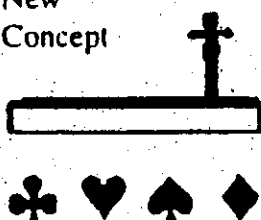
Pts	Name	(Club)	St/Prov
88	Ralph Goodall	(24)	AZ
71	Jon Taylor	(24)	AZ
66	G. Ivan Mundy	(24)	AZ
66	Robert A. Duckworth	(24)	AZ
57	John Alig	(24)	AZ
52	Joe Powell	(24)	AZ
47	Connie Meininger	(24)	AZ
43	Richard Partee	(24)	AZ
41	Carl Ludtke	(24)	AZ
40	Nancy R. Roncetti	(115)	PA
38	Helen L. Mroczkiewicz	(24)	AZ
38	Leonard Duckworth	(24)	AZ
34	Thomas M. Halatsis	(24)	AZ
31	Terry Hurtgen	(24)	AZ
30	Jeanette Powell	(24)	AZ

## Eastern Region

- 1 886 Palmer, Harry, MA**  
 2 693 Hardy, Jerry, ME  
 3 641 Clemmey, David, MA  
 4 624 Schmidt, Phyllis, MA  
 5 595 Corrado, Frank, CT  
 6 521 West, Richard H., MA  
 7 500 Medeiros, Shar'e, MA  
 8 499 Gallagher, Paul M., MA  
 9 492 Raynes, Jeff, NC  
 10 479 Widener, Keith E., NC  
 11 456 Medeiros, Robert, MA  
 12 399 Remington, Earle W., RI  
 13 360 Perkins, Catherine, NC  
 14 358 Kaplan, Robert, MA  
 15 326 King, Maynard, PA  
 16 318 Stuart, Bobby, GA  
 17 311 Rancourt, Laurie, ME  
 18 283 Lafleur, Donna, CT  
 19 282 Hamel, Armand P., MA  
 19 282 Miller, Albert, NH  
 21 277 Chrabaszcz, Emil, MA  
 22 273 Rooney, John J., MA  
 23 270 Drukmán, Robert, MA  
 24 259 Mueller, Hal, ON  
 25 254 Tanner, James H., VA  
 26 237 Milk, Robert, VA  
 27 233 Boubour, Barbara, CT  
 27 233 Douglass, Henry, NC  
 29 229 Bergeron, Henry, NH  
 30 228 Shwartz, Emily, MA  
 31 219 Berry, Hugh A., VA  
 32 217 Caccia, Louis J., MA  
 33 215 Ritchey, Dave, FL  
 34 212 Brown, R. Bruce, MA  
 34 212 Sattler, Bruce D., MD  
 36 208 Enos, Malcolm R., NJ  
 36 208 Veradt, Zeke, MA  
 38 206 Campbell, David, ME  
 39 201 Morrison, Joan, MA  
 40 200 Dolge, Charles, NC  
 41 199 Samet, Laurence, MA  
 42 197 Delinsky, John, MD  
 43 192 Gendron, Leo P., MA  
 44 190 Marani, John S., MA  
 44 190 Martin, James, MA  
 46 187 Fletcher, Joan, CT  
 47 184 Finley, Charlie, CT  
 48 179 Brent, Linda M., MD  
 49 178 Andrew, Rich., NH  
 50 172 Gallagher, War'n, MA  
 50 172 Struminger, Victor, GA  
 52 168 Beauregard, Joseph, RI  
 53 167 Caprigno, Dennis, MA  
 54 166 Frattallone, Pat, CT  
 54 166 Veradt, Cindy, MA  
 56 165 Fischer, Ray, NC  
 57 163 Crete, Daniel, NH  
 58 161 Cousens, Susan, ME  
 59 160 Ready, James, MA  
 60 158 Chambers, John, RI  
 61 157 Schaeffer, Betty, FL  
 62 154 Palmer, Brenda, MA  
 63 152 Batterson, Paul, CT  
 64 151 Schnabel, Tim, GA  
 65 147 Stump Sr., Perry, FL  
 66 146 Martin, Phil, CT  
 66 146 Azevedo, Mike, MA  
 68 145 Shoemaker, William, CT  
 69 144 Deane, Sharon L., VA  
 70 141 Bergeron, Paula, NH  
 71 140 Cunningham, Bob, MA  
 72 139 Christiansen, Dw't, CT  
 72 139 Da Silva, Alex, MA  
 74 137 Lynch, Jim, MA  
 75 136 Llewellyn, Pat, MA  
 76 135 Webster, Mark, ME  
 77 132 Reece, Ronald K., VA  
 78 131 Dubois, Jeannine, MA  
 79 130 Streeter, Louise, NH  
 79 130 Bouchard, Barbara, ME  
 81 129 Dinwoodie, Al, RI  
 82 127 Lunder, Jim, FL  
 83 126 Fiorini, Tom, MA  
 84 124 Shea Jr., Thomas, MA  
 84 124 Gehrlch, Dutch, MD  
 84 124 Fitzgerald, Robert, CT  
 87 122 Scanlan, Dan, MA  
 88 120 Parenteau, Dave, FL  
 89 117 Cundy, James E., RI  
 90 115 Clark, Theresa, MA  
 90 115 Manter, Louis, ME  
 90 115 Daesch, Joe, FL  
 93 114 Groz, John C., FL  
 94 113 Rosenberg, Max'l, CT  
 95 112 Setian, Peter, MA  
 96 111 Barnes, Paul C., FL  
 97 110 Roncetti, Nancy R., PA  
 98 109 Palmer, Carl, ME  
 99 108 Peever, Lindsay C., FL  
 99 108 Plechota, Mathew, MA  
 99 108 Abele, Paula, FL  
 99 108 Martin, Patricia, MA

### CRIBBAGE

A  
New  
Concept



John E. Chambers

### ENJOY THE MOST COMPREHENSIVE AND FASCINATING CRIBBAGE BOOK EVER WRITTEN

*Newly revised fifth edition*

- Makes a great birthday or Christmas gift.
- Easy to read print.
- Learn the Chambers system for board strategy.
- Novice players: learn Cribbage fundamentals properly.
- Learn to play Cribbage Solitaire.
- A complete two player game with explanation.
- Charles Cotton's 1694 description of Cribbage.
- Other things of interest also included in 178 pages.

**Still only \$6.95 per book or \$12.00 for 2 books**

**Send check or money order to:**

**John E. Chambers**

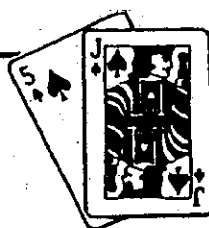
**P. O. Box 40068**

**Providence, RI 02940**

Canadians orders add \$3.00, allow 2-3 weeks delivery

## Central Region

- |                              |                              |                               |
|------------------------------|------------------------------|-------------------------------|
| 1 931 Toll, Duane W., WI     | 35 235 Kraft, Lloyd L., WI   | 67 150 Draper, David, MI      |
| 2 556 Chase, Robert, MN      | 36 234 Perez, Emilio, IL     | 67 150 Richards, Chet, IA     |
| 3 535 Frost, Richard, WI     | 37 231 Bernard, Joe, IL      | 70 147 Tushar, William F., WI |
| 4 508 McCabe, Bob, WI        | 38 227 Briski, Tom, WI       | 71 146 Algiers, Lawrence, WI  |
| 5 503 Flesch, Donald, WI     | 39 221 Hirshman Sr., Ron, WI | 72 145 Pasiuk, Francis J., MN |
| 6 451 Wingo, Robert, IL      | 40 220 Tofte, Donald T., WI  | 73 142 Fischer, Jerome, WI    |
| 7 448 Gruber, Gerald, MN     | 41 214 Lang, Marvin, IL      | 73 142 Bailey, Allen, MN      |
| 8 439 Julian, Robert, WI     | 42 207 Steplyk, Max D., WI   | 75 138 Mintner, Thomas, WI    |
| 9 414 Lindner, Alan, WI      | 42 207 Shimp, Joy, MI        | 76 137 Upton, Patricia, MN    |
| 10 410 Yaeger, Dave, MO      | 44 205 Barrett, Arlene, WI   | 76 137 Syftestad, John, WI    |
| 11 395 Fingleton, Martha, WI | 45 204 Munneke, Doug, MN     | 76 137 Upton, Norbert, MN     |
| 12 370 Hiland, John, WI      | 46 196 Stoa, David E., MN    | 79 135 Lee, Brock R., TX      |
| 13 361 Page, Doug, WI        | 47 195 Kvien, Les, IL        | 80 133 Biegler, Gene, WI      |
| 14 349 Danielski, Frank, WI  | 48 194 Railsback, Helen, NE  | 81 131 La Count, Jim, WI      |
| 15 346 Danihel, Tony, WI     | 49 192 Wauters, Roger, WI    | 82 129 Lazachek, Marlene, WI  |
| 16 345 Steinmetz, Wayne, WI  | 50 190 Loupee, Larry C., IA  | 83 126 Rein, Joan, MN         |
| 17 343 Lindner, Vickie, WI   | 51 184 Lui, Laura, WI        | 83 126 Stankus, George, IL    |
| 18 339 Huser, James, WI      | 52 181 Kilkelly, Paul, IL    | 85 125 Pokorney, Jim, WI      |
| 19 322 Burns, Mike, MN       | 52 181 Plummer, Daulph, OH   | 86 124 Mikulsky, Aggie, WI    |
| 20 318 Schaefer, Aian, WI    | 52 181 Wauters, Jeanne, WI   | 87 123 Johnson, Leroy, MN     |
| 21 308 Joslin, Bob, MN       | 55 173 Edwards, Tom, IL      | 87 123 Schweig, Roberta, IL   |
| 22 304 Schaefer, Todd, MN    | 56 171 Taylor, Dan, MN       | 87 123 Koncan, Thomas J., IL  |
| 23 298 Jacka, Mike, MN       | 57 167 Lawent, Stuart, WI    | 90 121 Masnica, Ken, WI       |
| 24 296 Pluff, Daniel, MN     | 57 167 Fox, Earl G., MN      | 90 121 Matzke, Neal R., WI    |
| 25 274 Maresh, Tom, WI       | 57 167 Carberry, Paul, MN    | 92 120 Hansen, Ray, IA        |
| 26 270 Rowley, Larry, WI     | 60 165 Heinowski, Ed, WI     | 93 119 Nordlund, Kathie, MN   |
| 27 267 Patrin, Donald A., MN | 61 162 Ralston, Ronald, IA   | 94 112 Demoulpied, Lyle, MI   |
| 28 266 Henderson, Doug, WI   | 62 161 Boufflou, Karen, WI   | 95 110 Sather, Alice, MN      |
| 29 258 Kniech, Nicky, WI     | 63 158 McNurien, Dennis, IA  | 96 108 Miskowic, Walter, MN   |
| 30 253 Sommer, Robert, MN    | 64 157 Karr, Allen E., WI    | 97 105 Barrett, Patrick, WI   |
| 30 253 Kiley, Bob, WI        | 65 155 Railsback, Buzz, NE   | 98 103 Wunrow, George, WI     |
| 32 246 Lui, Jeffrey, WI      | 66 151 Mikulsky, Eugene, WI  | 99 101 Fosdal, Lois M., WI    |
| 33 239 Sondericker, W'n, WI  | 67 150 Matti, Gaylord E., WI | 100 100 Den Dekker, Emil, WI  |
| 34 237 Schmidt, Cyril, WI    |                              |                               |



## CRIBBAGE MASTER

*Seen at the 16th National Open in Raleigh*

**Computer Cribbage for the IBM PC and Compatibles**

■ Game Challenge ■ Solitaire ■ Duplicate ■ Discard Master ■ Discard Query

*The complete standard game and much more. Terrific graphics, easy to play*

**Cribbage Master** is a tough opponent and the best computer program there is! You will agree...full refund if you don't!

**\$49.95 plus \$2 shipping/handling : 3.5"**

**Silversoft**  
2150 Spruceway Lane  
Ann Arbor, MI 48103

**Bruce M. Bowman**  
(734) 747-8766 (days)  
(734) 994-5398 (eve.)



## Western Region

- |                                 |                               |                              |
|---------------------------------|-------------------------------|------------------------------|
| 1 806 Crawford, Jim, CA         | 35 280 McKnight, Jim, CA      | 68 202 Bailey, Jim, OR       |
| 2 791 Colvert, De Lynn, MT      | 36 275 Wardenburg, Rich., CA  | 68 202 Noll, Dave, WA        |
| 3 723 Furler, John, OR          | 37 266 Brown, Donald, CA      | 70 201 Herrmann, Mary, CA    |
| 4 711 Morgan, Ronald L., CA     | 38 263 Reynolds, Steve, CA    | 70 201 Braach, David D., MT  |
| 5 705 Hall, Roland A., CA       | 39 262 Thorson, Troy, CO      | 72 200 Blackman, Keith, OR   |
| 6 601 Bartosh, Bob, CA          | 40 257 Mitchell, Danny, CA    | 73 199 Mackie, George, WA    |
| 7 600 Hatcher, Paul, OR         | 40 257 Sutton, Sylvia, CA     | 74 197 Berman, Roz, CA       |
| 8 588 Fernandez, Cres, CA       | 40 257 Pomerleau, Julien, CA  | 75 196 Marsh, Dan, OR        |
| 9 560 Mack, Herschel, CA        | 43 251 Felkins, Julie, CA     | 75 196 White, Fred L., HI    |
| 10 480 Heath, Rollie, OR        | 44 247 Deutsch, Ira T., CA    | 77 193 Robe, William, OR     |
| 11 477 McComas, Chris, WA       | 45 244 Fraker, Ruth J., CA    | 77 193 Heath, Carl L., OR    |
| 12 470 McDaniel, Mike, OR       | 46 243 Hornbacher, Jim, WA    | 79 192 Wikstrom, Bob, WA     |
| 13 427 Ashley, Mel, CA          | 47 242 Langley, James, CA     | 79 192 Sumner, Leslie, NV    |
| 14 418 Hofbauer, Roy, WA        | 48 238 Malmgren, Todd, OR     | 79 192 Osborne, O. K., ID    |
| 15 414 Rodgers, Charles, HI     | 48 238 Hejzmanek, Sharon, MT  | 82 189 Banducci, R. Roy, CA  |
| 16 407 Jelke, Jeanne, WA        | 50 237 Roy, Paul, WA          | 82 189 Foy, Rod, CA          |
| 17 404 Hassett, Larry, OR       | 51 234 Njaa, H. Ross, CA      | 82 189 Davis, Betty J., CO   |
| 18 391 Hendricks, Rosey, WA     | 51 234 Mack, Rickie, CA       | 82 189 Madrone, Cy, CA       |
| 19 390 Montooth, Tony, CA       | 53 230 Harding, Steve, CA     | 82 189 Nielsen, Jeanette, OR |
| 20 380 O'Malley, William P., OR | 54 228 Edwards, Sue, CO       | 87 188 Morse, Clair E., OR   |
| 21 377 Gillmore, Evelyn, CA     | 55 224 Rideau, Rodney, CA     | 88 187 Jacobs, Dennis, CA    |
| 22 375 Green, Michael D., CA    | 56 219 Nikodym, Norman, CA    | 88 187 Taylor, Rod, OR       |
| 23 349 Honeycutt, Harvey, OR    | 57 216 Diefenbach, Bob, OR    | 90 186 Bentz, Ervin C., CA   |
| 24 343 Hutchinson, Bill, CO     | 57 216 Pomeroy, Pamela, CA    | 91 185 Gromek, Robert, NV    |
| 25 312 Waldvogel, Jim, CA       | 57 216 Pafford, June, WY      | 92 182 Schell, Michael, WA   |
| 26 304 Blackman, Jerry, OR      | 60 214 Goodman, Len, CA       | 93 181 Hein, Leslie, WA      |
| 27 302 Moy, Albert, CA          | 61 213 Sladek, Charles, CA    | 94 178 Fein, Bruce, NV       |
| 28 301 Morrow, Jim, WA          | 62 211 Eiffert, Annett J., CA | 95 177 Rollo, Suzanne, CA    |
| 29 298 Baird, Rick, OR          | 63 208 Moritzky, Jack, WA     | 96 174 Walker, Linton, BC    |
| 30 294 Rasmussen, Ras., WA      | 64 206 Ng, Harry, CA          | 97 173 Proechel, Wayne, CA   |
| 31 289 Wakeman, Bill, CA        | 65 205 Anderson, Todd, OR     | 98 172 Brumley, Robert, WA   |
| 32 284 Gilkeson, Bryant, NV     | 66 204 Johnson, Bill, CA      | 98 172 Blackman, Carolyn, OR |
| 32 284 McDonald, Boyd, CA       | 67 203 Goodman, Milton, CA    | 100 169 McCammon, Mike., NV  |
| 34 283 Jarrell, Jesse, CA       |                               | 100 169 Nelson, Bernie, OR   |



*bette's cribb*



**Specializing in cribbage novelties**  
*designed by cribbage lovers*

**Cribbage Books - Cribbage Game Variations**  
**Cribbage Boards - Shirts - Hats - Bumper Stickers**  
**Pegs - Games - Pins - Jewelry - Signs**  
**Playing Cards**

**Send for our**  
**free catalog**

**bette's cribb**  
**P. O. Box 170**  
**Carolina, RI 02812**

**bbemis7@cox.net**  
**or**  
**(401) 364-7241**  
**after 4 PM**

**Carter Cribbage Classic**  
 Carter, WI, Jan 9-10, 2004  
 Director: Dottie Culver  
 MAIN: 100  
 1 147 Stuart Lawent, Waupun WI  
 2 105 Patrick Barrett, WI Rapids WI  
 3 70 Emil Den Dekker, St Nazianz WI  
 3 70 Tom Edwards, Waukegan IL  
 CONSOLATION: 57  
 1 60 Donald Flasch, Brookfield WI  
 2 40 Robert Chase, Minneapolis MN  
 3 24 Marsha Mahan, Appleton WI  
 3 24 Lyle R. Lund, Carver MN

**Virginia Championship**  
 Richmond, VA, Jan 10-11, 2004  
 Director: Rick Allen  
 MAIN: 62  
 1 105 Frank Carter, Raleigh NC  
 2 70 Marvin Lewis, Chesapeake VA  
 3 42 Ray Klocko, Virginia Beach VA  
 3 42 Warren Gallagher, Melrose MA  
 CONSOLATION: 47  
 1 60 Rick Bryant, Jarrettsville MD  
 2 40 Phillip Babcock, Alexandria VA  
 3 24 Dutch Gehrlich, Bowie MD  
 3 24 Michael Ferretta Jr., Chesapeake VA

**Washington Champ.**  
 Centralia, WA, Jan 10-11, 2004  
 Director: Elmer G. Rasmussen  
 MAIN: 186  
 1 196 Roy Hofbauer, Washougal WA  
 2 147 Bryant Gilkeson, Reno NV  
 3 105 Dave Noll, Tacoma WA  
 3 105 Jeff Olson, Puyallup WA  
 5 70 Jerry Blackman, Bend OR  
 5 70 Paul Roy, Edmonds WA  
 5 70 Paul Hatcher, Salem OR  
 5 70 Clarence Cole, Sherwood OR  
 CONSOLATION: 128  
 1 84 James C. Taylor, Bend OR  
 2 60 Larry Lee, Chelhalis WA  
 3 40 Robert Brumley, Sunnyside WA  
 3 40 George Mackie, Seattle WA

## TOURNAMENT RESULTS

### Master Rating Points have been entered for the seven tournaments listed

**Peg For The Border**  
 San Diego, CA, Jan 17-18, 2004  
 Director: Shelley Berman  
 MAIN: 44  
 1 105 Roz Berman, El Cajon CA  
 2 70 Michael Green, Los Angeles CA  
 3 42 Leroy Johnson, Faribault MN  
 3 42 Darlene Carr, San Jose CA  
 CONSOLATION: 24  
 1 40 Donald Brown, Long Beach CA  
 2 24 Tom Bongard, La Mesa CA  
 3 12 Cy Madrone, Santa Barbara CA  
 3 12 Julie Hardardt, Lakeside CA

**Savannah GA Open**  
 Garden City, GA, Jan 17-18, 2004  
 Director: Bill Cooper  
 MAIN: 78  
 1 147 Betty Schaeffer, Kissimmee FL  
 2 105 Jeff Raynes, Cary NC  
 3 70 Jim Lunder, Cape Canaveral FL  
 3 70 Lindsay C. Peever, Leesburg FL  
 CONSOLATION: 42  
 1 60 Joy Barnes, Daytona Beach FL  
 2 40 Steve Angler, Decatur GA  
 3 24 Bobby G. Stuart, Lawrenceville GA  
 3 24 Aaron Geroux, Fayetteville NC

**Pacific Coast Champ.**  
 Salinas, CA, Jan 17-18, 2004  
 Director: H. Ross Njaa  
 MAIN: 100  
 1 147 Jeanne Jelke, Pasco WA  
 2 105 Albert Moy, Lafayette CA  
 3 70 Stephen Reynolds, Concord CA  
 3 70 Ervin Bentz, San Francisco CA  
 CONSOLATION: 70  
 1 84 Boyd R. McDonald, Mtn View CA  
 2 60 R. Roy Banducci, Nipomo CA  
 3 40 Leon Korba, Atascadero CA  
 3 40 Cres Fernandez, Sonoma CA

**Super 'Lite'**  
 West Springfield, MA, Jan 25, 2004  
 Director: C. Finley & H. J. Law  
 MAIN: 114  
 1 147 Jerry Hardy, Bowdoin ME  
 2 105 Pat Llewellyn, Bellingham MA  
 3 70 Susan Cousins, Windham ME  
 3 70 Richard H. West, Attleboro MA  
 CONSOLATION: 62  
 1 60 Robert Medeiros, Dorchester MA  
 2 40 Jay Scungilo, Wilbraham MA  
 3 24 Frank Corrado, Glastonbury CT  
 3 24 Barbara Barbour, S. Windsor CT

## AWARDS

**LIFE MASTER**  
**97 - R. ROY BANDUCCI, NIPOMO, CA**

**GRAND MASTER**  
**201 - BRYANT GILKESON, RENO, NV**  
**202 - GEORGE MACKIE, SEATTLE, WA**

**MASTER**  
**562 - JULIE FELKINS, DIXON, CA**



# Membership Application

Memberships include the Cribbage World magazine

Please print clearly

New \_\_\_\_\_ Renewal: \_\_\_\_\_ ACC No(s): \_\_\_\_\_

Name: \_\_\_\_\_

Spouse's Name: \_\_\_\_\_  
(Only if joint application)

Address Line 1: \_\_\_\_\_

Address Line 2: \_\_\_\_\_  
(Complete mailing address - include apartment #, lot #, space #, etc.)

City \_\_\_\_\_ ST \_\_\_\_\_ Zip: \_\_\_\_\_

Country \_\_\_\_\_ GR Club No: \_\_\_\_\_

Optional: Email: \_\_\_\_\_

Optional: Phone No: \_\_\_\_\_

Signature/date: \_\_\_\_\_

Individual

Married Couples

Junior Dues (under 18)

Life Member (60 and over) \*

Life Member Spouse (60 and over)\*

(Spouse \$2/year x \_\_\_\_\_ yr)\*\*

ACC Rule Book (number \_\_\_\_\_) x

Junior Program Donation

10.00

12.00

3.00

80.00

40.00

2.00

Total Amount Remitted - USD

To join make checks payable to ACC and send to:

ACC Membership Secretary  
PMB 5194

1030 W Harvard Ave

Roseburg, OR 97470-2923

\* A photocopy of proof of birthday (driver's license, etc) must accompany applications for Life Memberships.

\*\* Spouse under 60: add \$2 per year or part year under 60

Note: If phone number and email address are provided, member's signature authorizes use of this information for official purposes only.

Postmaster:  
Send  
Address Changes  
to:

Cribbage World  
PMB 5194  
1030 W. Harvar Ave.  
Roseburg, OR  
97470-2923

# *The Sands Regency*

CASINO-HOTEL  
RENO

Toll Free Reservations  
1-800-648-3553  
[www.sandsregency.com](http://www.sandsregency.com)

**PROUD ACC SPONSOR  
SINCE 1986**

*Home of the*  
**Joseph Petrus Wergin Open  
and  
Tournament of Champions**

*Bill and Dorthalee Irons'*

**Independence Day Classic  
July 2-4, 2004**

**Veterans Day Classic  
November 12-14, 2004**

**Home of the World's  
Largest Cribbage  
Tournament**

29\*23\*\*\*\*\*MIXED AADC 555

Expiration Date: 01/01/2010

ACC Archivist S C 150

C/O CHARLES K. CABBELL

83 Lee Dr

Modoc SC 29838-9708

